

CENTURY COLLEGE  
3300 CENTURY AVE N  
WBL, MN 55110

DESIGNED FOR  
KATE APABLAZA  
BY  
**BEACH HOUSE**

KBD 2020  
BASIC CAD

First Floor Beach House

|     | DATE    | BY |
|-----|---------|----|
| DWN |         |    |
| REV |         |    |
|     | 7/14/21 |    |
|     |         |    |

Student  
Version

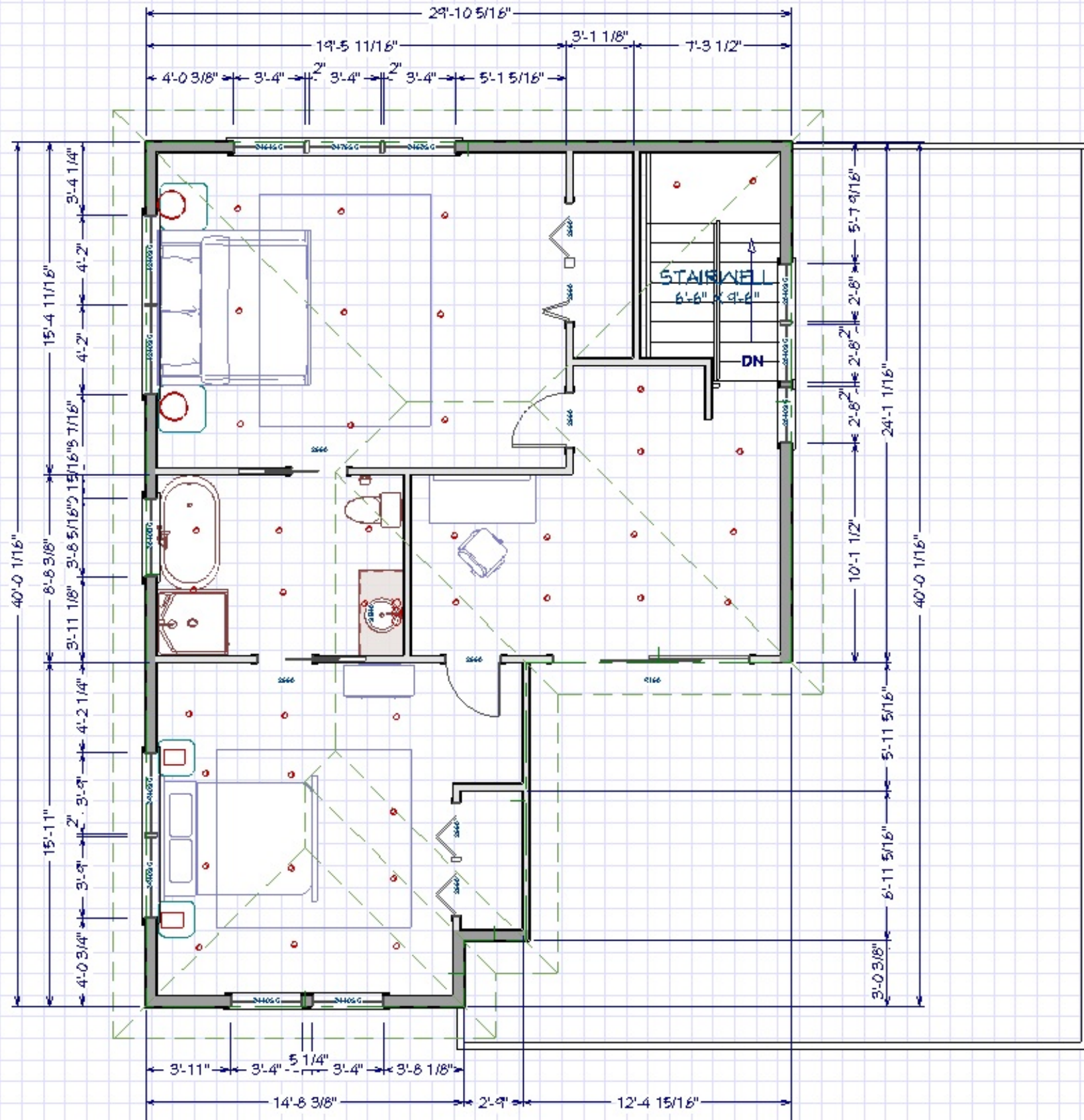
Not for  
Construction  
Documents

1

SCALE SEE VIEW  
Applicable on Arch B Paper

DATE

SHEET #



CENTURY COLLEGE  
3300 CENTURY AVE N  
WBL, MN 55110

DESIGNED FOR  
KATE APABLAZA  
BY  
BEACH HOUSE

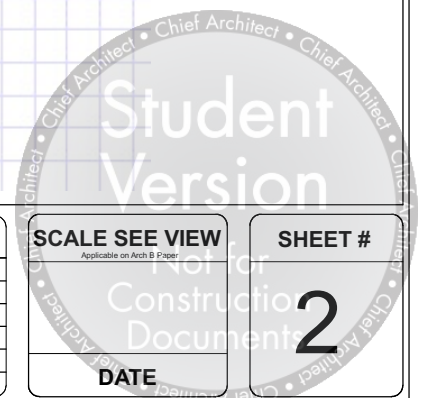
KBD 2020  
BASIC CAD

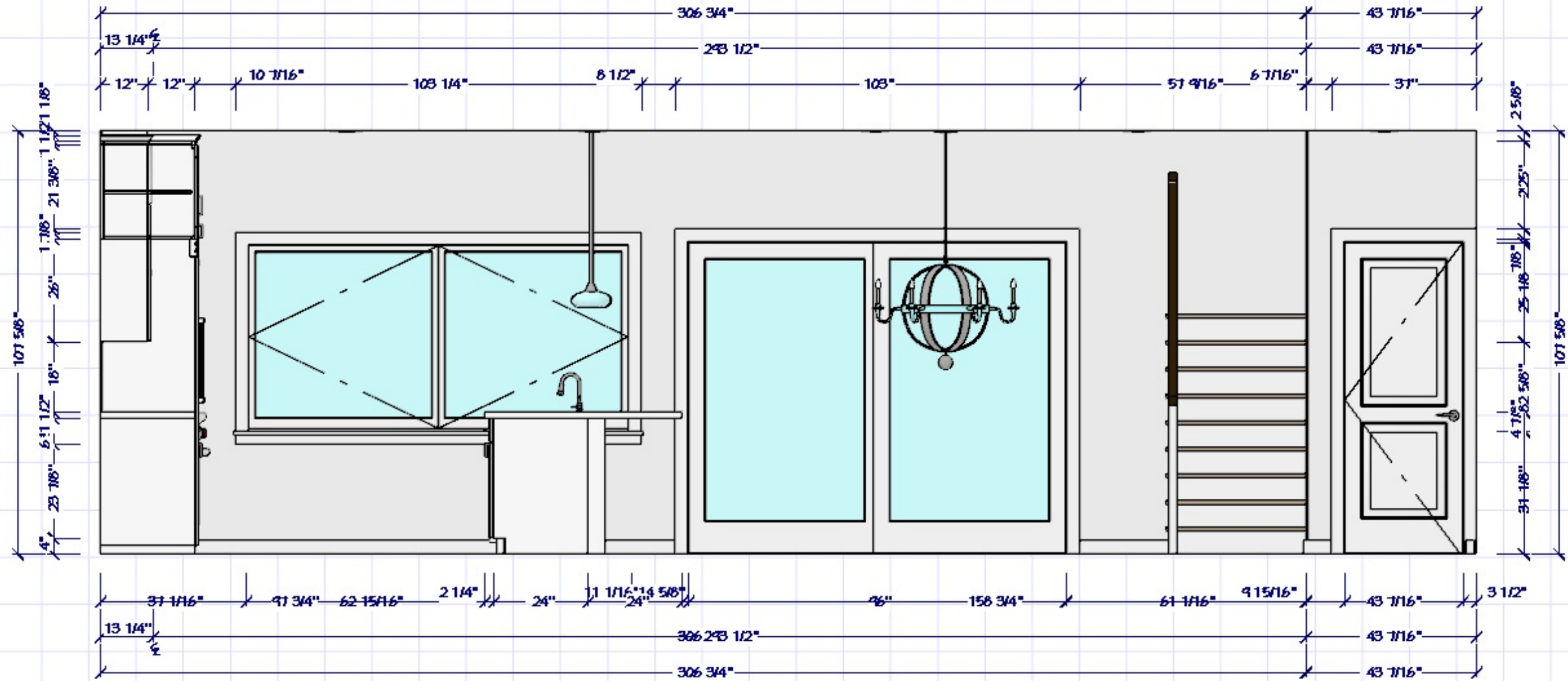
Second Floor Beach  
House

|     | DATE    | BY |
|-----|---------|----|
| DWN |         |    |
| REV |         |    |
|     | 7/14/21 |    |
|     |         |    |

SCALE SEE VIEW  
Applicable on Arch B Plans  
Not for  
Construction  
Documents  
DATE

SHEET #  
2





CENTURY COLLEGE  
3300 CENTURY AVE N  
WBL, MN 55110

DESIGNED FOR  
KATE APABLAZA

BY  
BEACH HOUSE

KBD 2020  
BASIC CAD

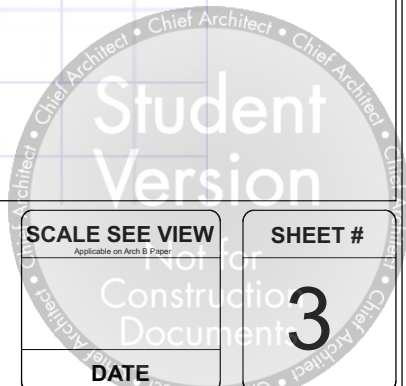
Kitchen Elevation

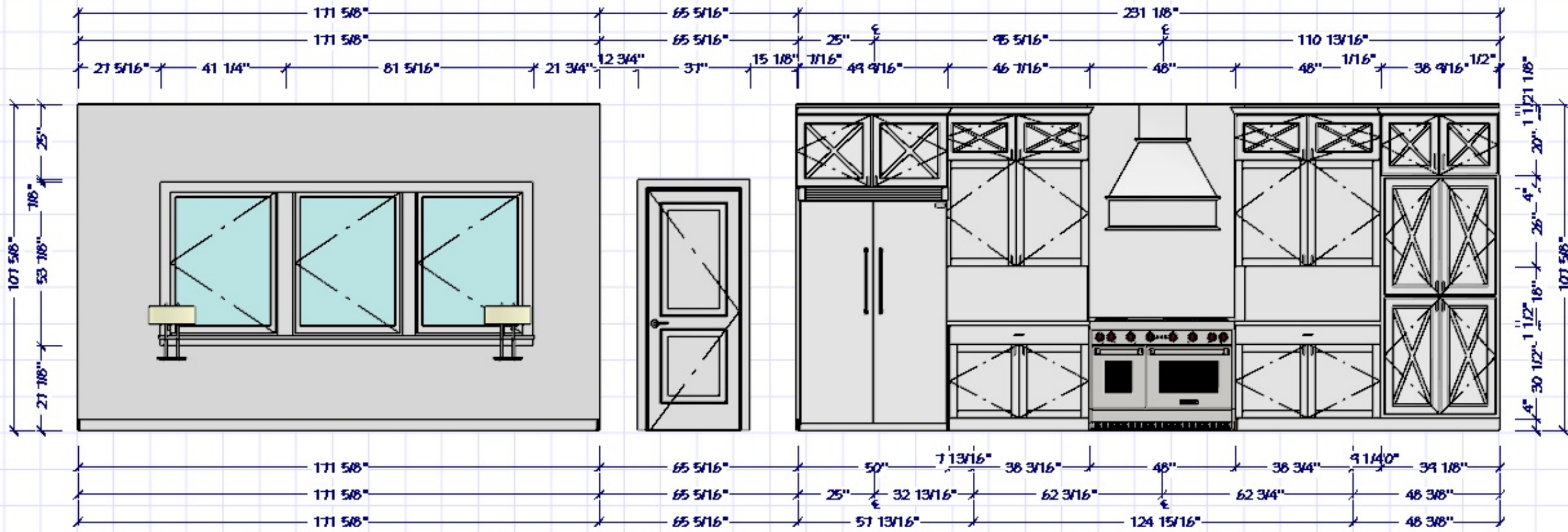
|     | DATE    | BY |
|-----|---------|----|
| DWN |         |    |
| REV |         |    |
|     | 7/14/21 |    |
|     |         |    |
|     |         |    |

SCALE SEE VIEW  
Applicable on Arch B Paper  
Not for  
Construction  
Document  
DATE

SHEET #

3





CENTURY COLLEGE  
3300 CENTURY AVE N  
WBL, MN 55110

DESIGNED FOR  
KATE APABLAZA  
BY  
BEACH HOUSE

KBD 2020  
BASIC CAD

KITCHEN  
FLOOR ELEVATION 2

|     | DATE    | BY |
|-----|---------|----|
| DWN |         |    |
| REV |         |    |
|     | 7/14/21 |    |
|     |         |    |
|     |         |    |

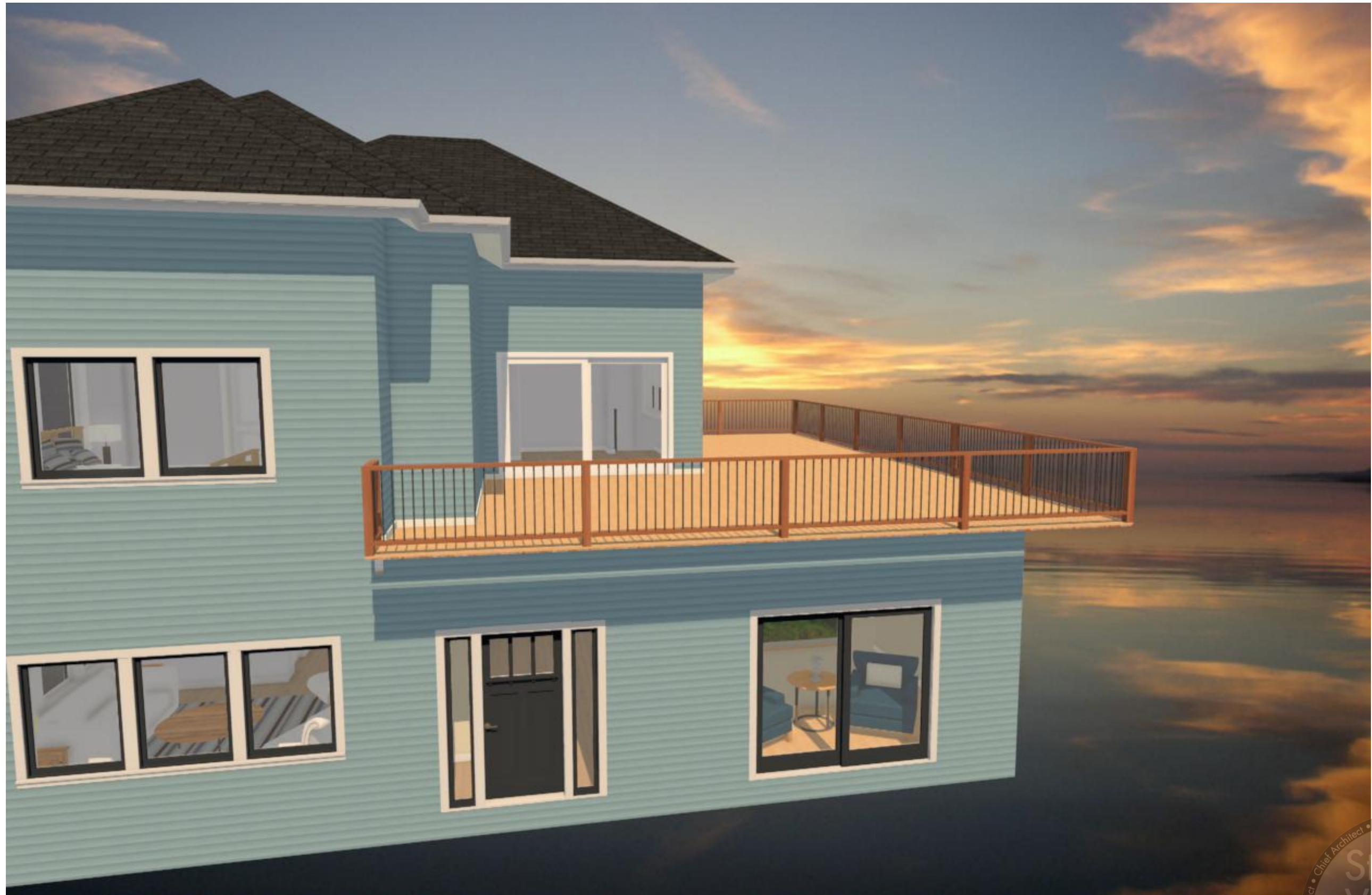
Student Version

Not for Construction Documents

SCALE SEE VIEW

DATE

SHEET # 4



**CENTURY COLLEGE**  
**3300 CENTURY AVE N**  
**WBL, MN 55110**

**DESIGNED FOR**  
**KATE APABLAZA**

**BY**  
**BEACH HOUSE**

**KBD 2020**  
**BASIC CAD**

**FRONT EXTERIOR**

|     | DATE    | BY |
|-----|---------|----|
| DWN |         |    |
| REV |         |    |
|     | 7/14/21 |    |
|     |         |    |
|     |         |    |

**SCALE SEE VIEW**  
Applicable on Arch B Page

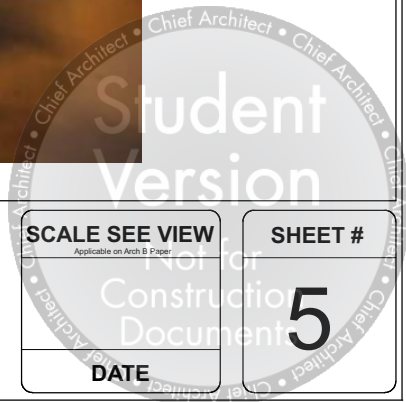
**Student**  
**Version**

**Not for**  
**Construction**  
**Document**

**SHEET #**

**5**

**DATE**





**CENTURY COLLEGE**  
**3300 CENTURY AVE N**  
**WBL, MN 55110**

**DESIGNED FOR**  
**KATE APPELBAZA**

**BY**  
**BEACH HOUSE**

**KBD 2020**  
**BASIC CAD**

**KITCHEN**  
**PERSPECTIVES**

|     | DATE    | BY |
|-----|---------|----|
| DWN |         |    |
| REV |         |    |
|     | 7/14/21 |    |
|     |         |    |
|     |         |    |

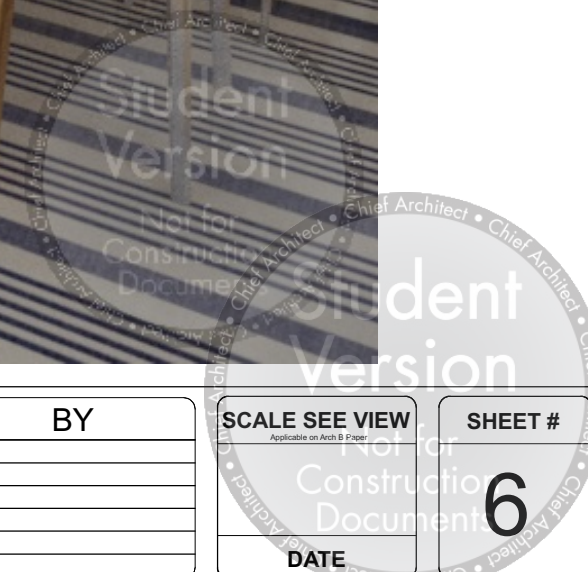
**SCALE SEE VIEW**

Applicable on Arch B Paper

**DATE**

**SHEET #**

**6**





Student Version  
 Not for Construction Documents  
 Student Version  
 Not for Construction Documents  
 7

**CENTURY COLLEGE**  
**3300 CENTURY AVE N**  
**WBL, MN 55110**

DESIGNED FOR  
~~KATE PABLANA~~  
 BY  
**BEACH HOUSE**

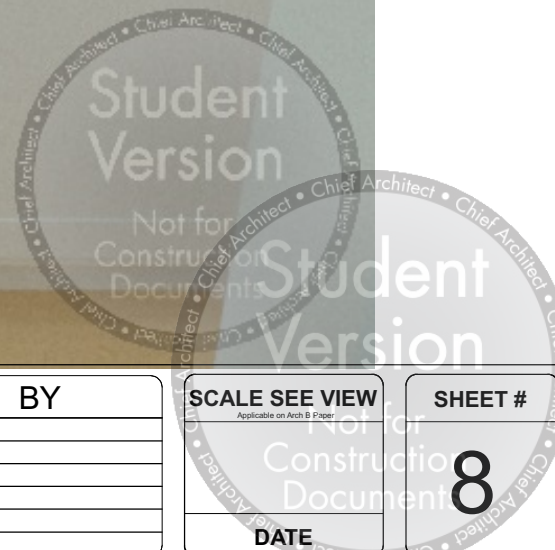
**KBD 2020**  
**BASIC CAD**

**MULTI-VIEW**  
**DRAWINGS**

|     | DATE    | BY |
|-----|---------|----|
| DWN |         |    |
| REV |         |    |
|     | 7/14/21 |    |
|     |         |    |
|     |         |    |

**SCALE SEE VIEW**  
Applicable on Arch B Plans  
 DATE

**SHEET #**  
**7**



**CENTURY COLLEGE**  
**3300 CENTURY AVE N**  
**WBL, MN 55110**

DESIGNED FOR  
**KATE APABLAZA**

---

BY  
**BEACH HOUSE**

**KBD 2020**  
**BASIC CAD**

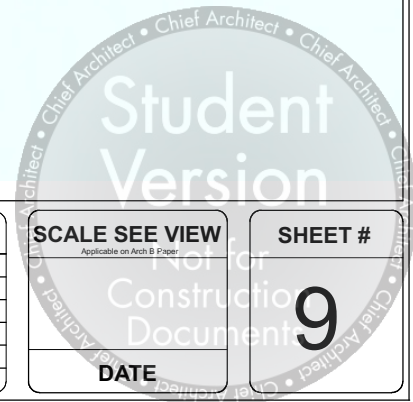
**BATHROOM 1st Floor**  
**PERSPECTIVES**

|     | DATE    | BY |
|-----|---------|----|
| DWN |         |    |
| REV |         |    |
|     | 7/14/21 |    |
|     |         |    |
|     |         |    |

**SCALE SEE VIEW**  
Applicable on Arch B Paper  
 Not for  
 Construction  
 Documents  
**DATE**

**SHEET #**  
**8**





**CENTURY COLLEGE**  
**3300 CENTURY AVE N**  
**WBL, MN 55110**

DESIGNED FOR  
**KATE APABLAZA**

---

BY  
**BEACH HOUSE**

**KBD 2020**  
**BASIC CAD**

**BATHROOM 1st Floor**  
**PERSPECTIVES**

|     | DATE           | BY |
|-----|----------------|----|
| DWN |                |    |
| REV |                |    |
|     | <b>7/14/21</b> |    |
|     |                |    |
|     |                |    |

**SCALE SEE VIEW**  
Applicable on Arch B Paper

---

Not for  
 Construction  
 Documents

---

DATE

**SHEET #**  
**9**



**CENTURY COLLEGE**  
**3300 CENTURY AVE N**  
**WBL, MN 55110**

DESIGNED FOR  
 KATE APABLAZA

---

BY  
**BEACH HOUSE**

**KBD 2020**  
**BASIC CAD**

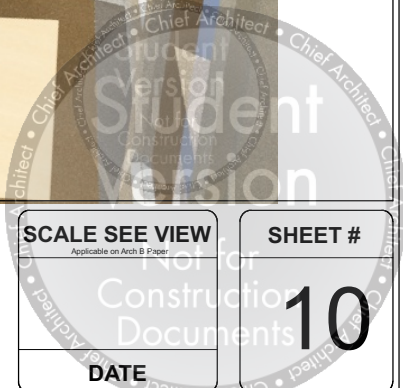
**Master Bedroom**  
**First Floor**

|     | DATE    | BY |
|-----|---------|----|
| DWN |         |    |
| REV |         |    |
|     | 7/14/21 |    |
|     |         |    |
|     |         |    |

**SCALE SEE VIEW**  
Applicable on Arch B Paper

DATE

**SHEET #**  
**10**





**CENTURY COLLEGE**  
**3300 CENTURY AVE N**  
**WBL, MN 55110**

**DESIGNED FOR**  
**KATE APABLAZA**

**BY**

**BEACH HOUSE**

**KBD 2020**  
**BASIC CAD**

**Kitchen & Dining Room**  
**Perspectives**

|     | DATE    | BY |
|-----|---------|----|
| DWN |         |    |
| REV |         |    |
|     | 7/14/21 |    |
|     |         |    |
|     |         |    |

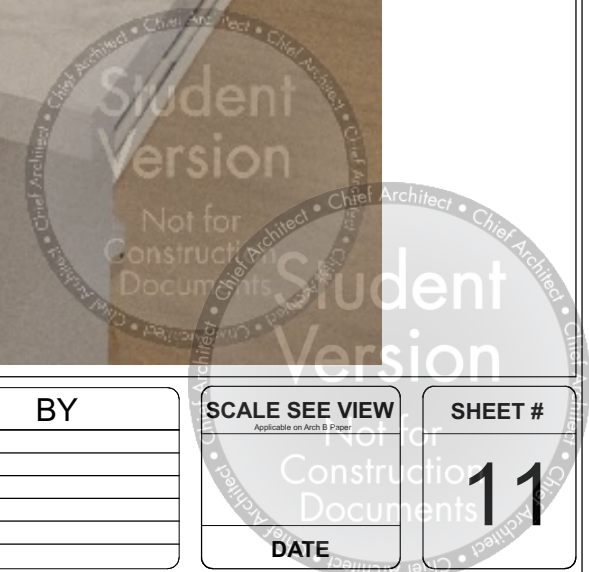
**SCALE SEE VIEW**

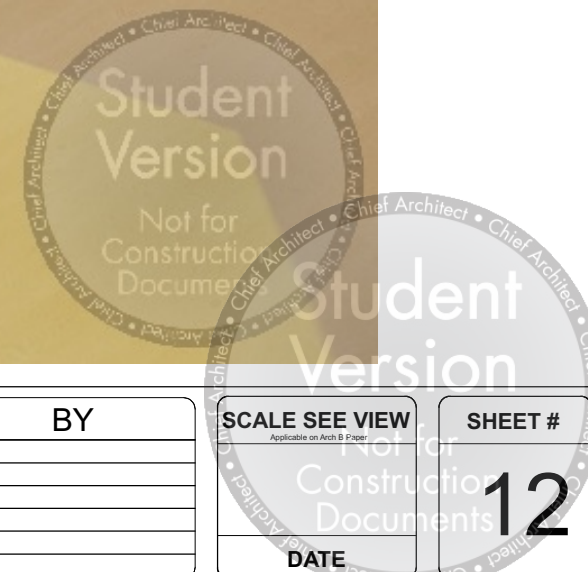
Applicable on Arch B Paper

**SHEET #**

**11**

**DATE**





**CENTURY COLLEGE**  
**3300 CENTURY AVE N**  
**WBL, MN 55110**

DESIGNED FOR  
**KATE APABLAZA**

---

BY  
**BEACH HOUSE**

**KBD 2020**  
**BASIC CAD**

**Bedroom 2**

|     | DATE           | BY |
|-----|----------------|----|
| DWN |                |    |
| REV |                |    |
|     | <b>7/14/21</b> |    |
|     |                |    |
|     |                |    |

**SCALE SEE VIEW**  
Applicable on Arch B Paper

**SHEET #**  
**12**



**CENTURY COLLEGE**  
**3300 CENTURY AVE N**  
**WBL, MN 55110**

DESIGNED FOR  
**KATE APABLAZA**

---

BY  
**BEACH HOUSE**

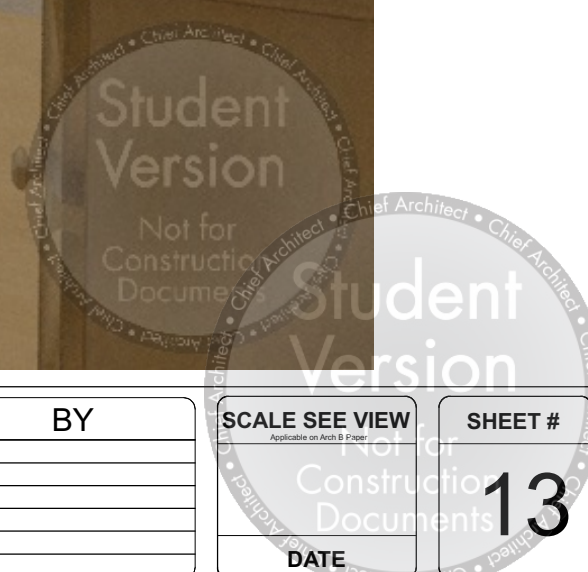
**KBD 2020**  
**BASIC CAD**

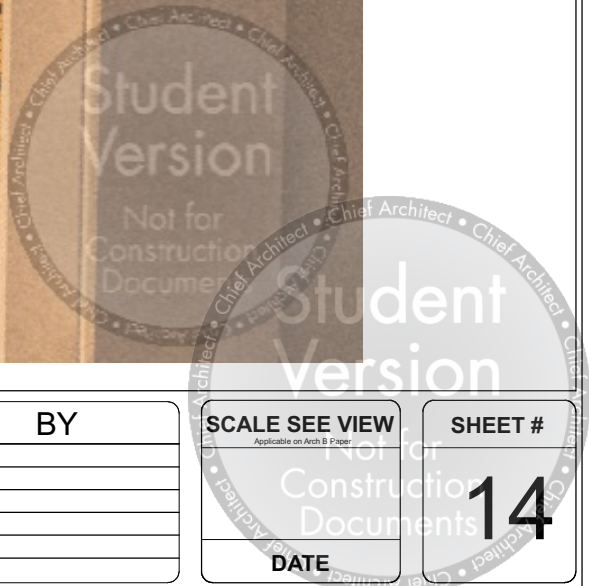
**Bedroom 3**

|     | DATE           | BY |
|-----|----------------|----|
| DWN |                |    |
| REV |                |    |
|     | <b>7/14/21</b> |    |
|     |                |    |
|     |                |    |

**SCALE SEE VIEW**  
Applicable on Arch B Drawings

**SHEET #**  
**13**





**CENTURY COLLEGE**  
**3300 CENTURY AVE N**  
**WBL, MN 55110**

DESIGNED FOR  
**KATE APABLAZA**

---

BY  
**BEACH HOUSE**

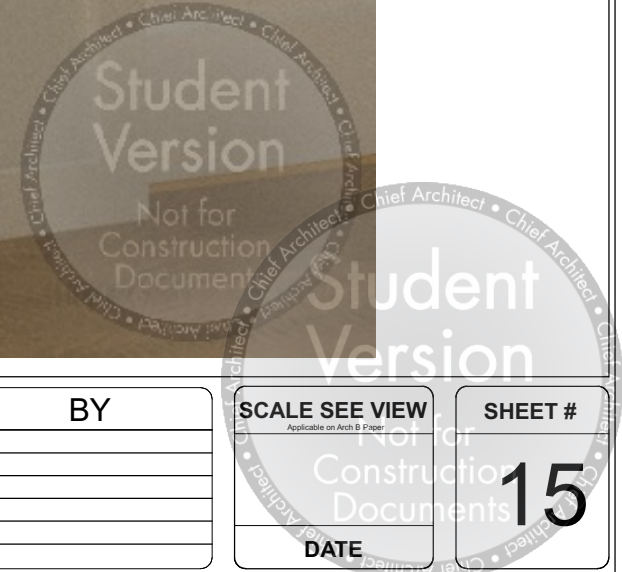
**KBD 2020**  
**BASIC CAD**

**Perspective to Deck**

|     | DATE           | BY |
|-----|----------------|----|
| DWN |                |    |
| REV |                |    |
|     | <b>7/14/21</b> |    |
|     |                |    |
|     |                |    |

**SCALE SEE VIEW**  
Applicable on Arch B Paper

**SHEET #**  
**14**



**CENTURY COLLEGE**  
**3300 CENTURY AVE N**  
**WBL, MN 55110**

DESIGNED FOR  
 KATE APABLAZA

---

BY **BEACH HOUSE**

**KBD 2020**  
**BASIC CAD**

**Home Office**

|     | DATE    | BY |
|-----|---------|----|
| DWN |         |    |
| REV |         |    |
|     | 7/14/21 |    |
|     |         |    |
|     |         |    |

**SCALE SEE VIEW**  
Applicable on Arch B Print

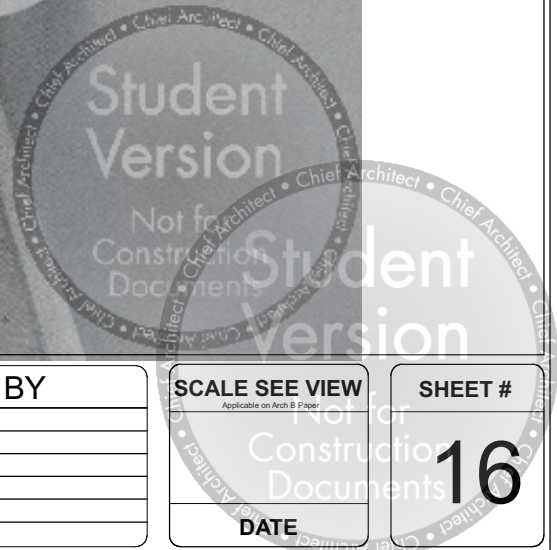
---

Not for Construction Documents

---

DATE

**SHEET #**  
**15**



**CENTURY COLLEGE**  
**3300 CENTURY AVE N**  
**WBL, MN 55110**

DESIGNED FOR  
**KATE APABLAZA**

---

BY  
**BEACH HOUSE**

**KBD 2020**  
**BASIC CAD**

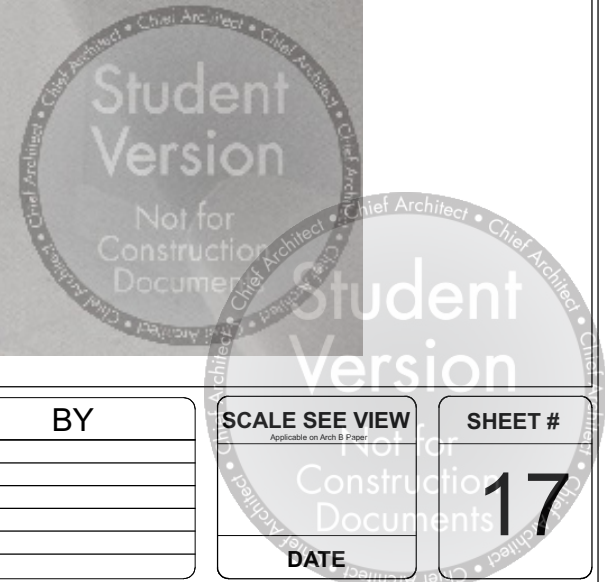
**Bathroom Second Floor**

|     | DATE           | BY |
|-----|----------------|----|
| DWN |                |    |
| REV |                |    |
|     | <b>7/14/21</b> |    |
|     |                |    |
|     |                |    |

**SCALE SEE VIEW**  
Applicable on Arch B Paper

**SHEET #**  
**16**





**CENTURY COLLEGE**  
**3300 CENTURY AVE N**  
**WBL, MN 55110**

**DESIGNED FOR**  
**KATE APABLAZA**

---

**BY**  
**BEACH HOUSE**

**KBD 2020**  
**BASIC CAD**

**Bathroom Second Floor**

|     | DATE    | BY |
|-----|---------|----|
| DWN |         |    |
| REV |         |    |
|     | 7/14/21 |    |
|     |         |    |
|     |         |    |

**SCALE SEE VIEW**  
Applicable on Arch B Paper

---

**Not for Construction Documents**

---

**DATE**

**SHEET #**  
**17**