

# Elevations for Kitchen

## Chief Architect Class

CENTURY COLLEGE  
3300 CENTURY AVE N  
WBL, MN 55110

DESIGNED FOR  
KATE APABLAZA  
BY  
NAME HERE

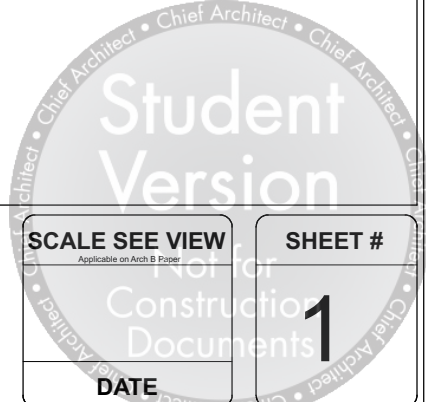
KBD 2020  
BASIC CAD

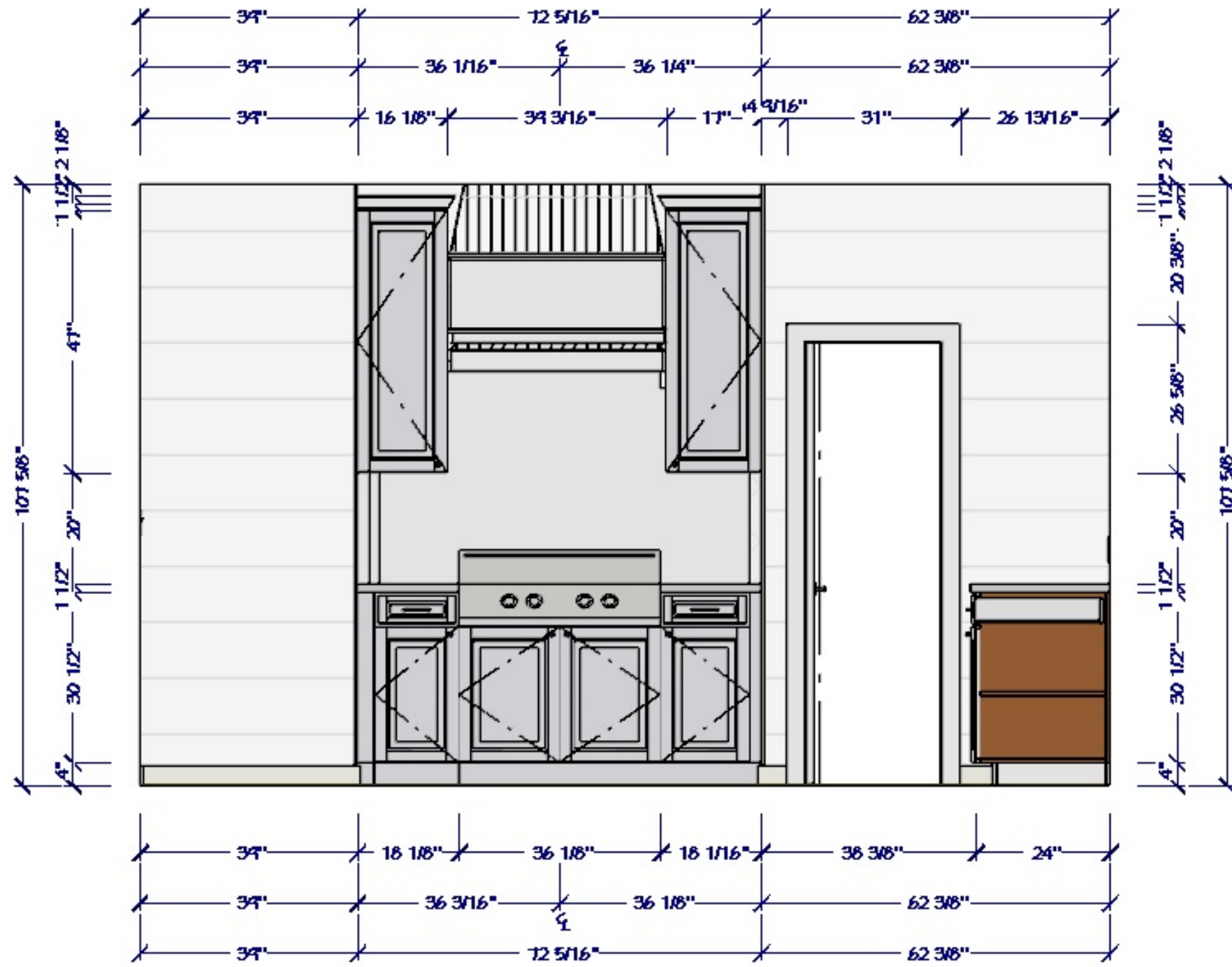
KITCHEN  
FLOOR  
PLAN

	DATE	BY
DWN		
REV		
	3/18/21	

SCALE SEE VIEW  
Applicable on Arch B Paper  
DATE

SHEET #  
**1**





CENTURY COLLEGE  
3300 CENTURY AVE N  
WBL, MN 55110

DESIGNED FOR  
KATE APABLAZA  
BY  
NAME HERE

KBD 2020  
BASIC CAD

ELEVATION  
S

	DATE	BY
DWN		
REV		

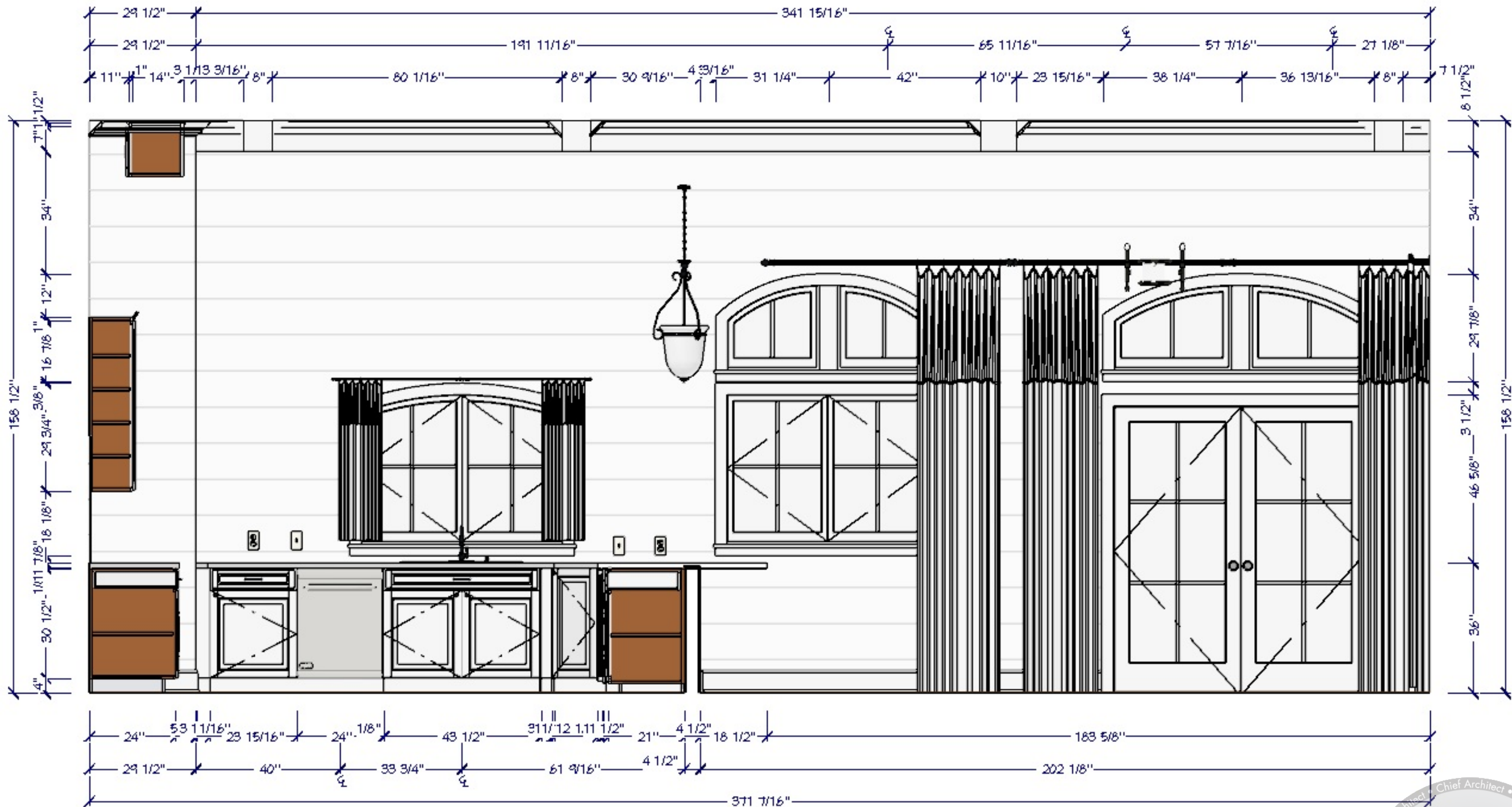
Student Version

SCALE SEE VIEW  
Applicable on Arch B Paper

Not for Construction Documents

SHEET #  
2

DATE



CENTURY COLLEGE  
3300 CENTURY AVE N  
WBL, MN 55110

DESIGNED FOR  
KATE APABLAZA  
BY  
NAME HERE

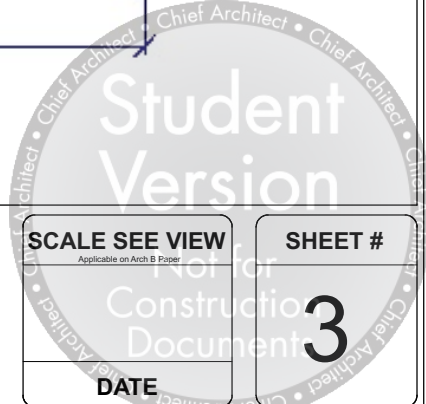
KBD 2020  
BASIC CAD

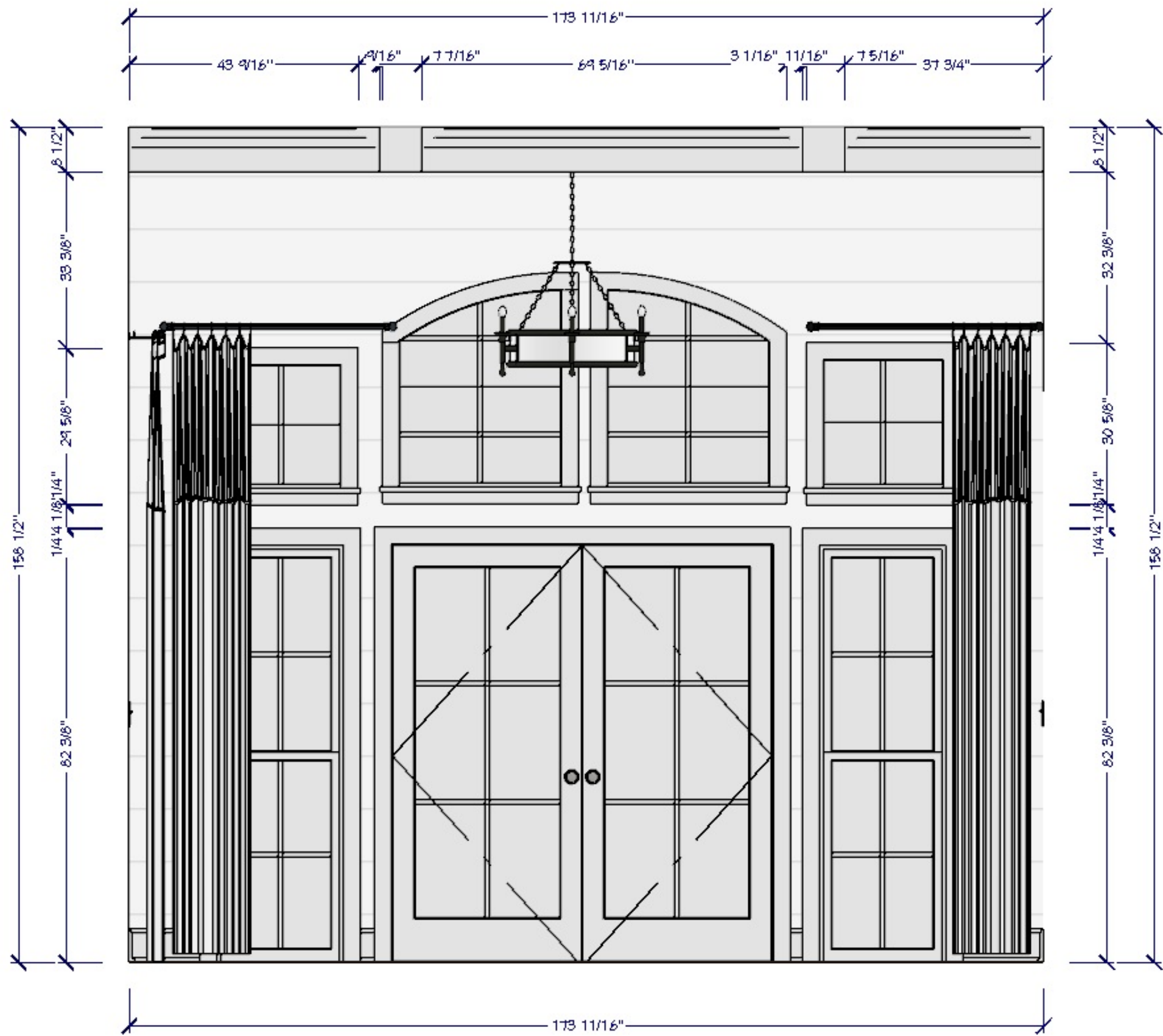
MULTI-VIEW  
DRAWINGS

	DATE	BY
DWN		
REV		

SCALE SEE VIEW  
Applicable on Arch B Paper

SHEET #  
3





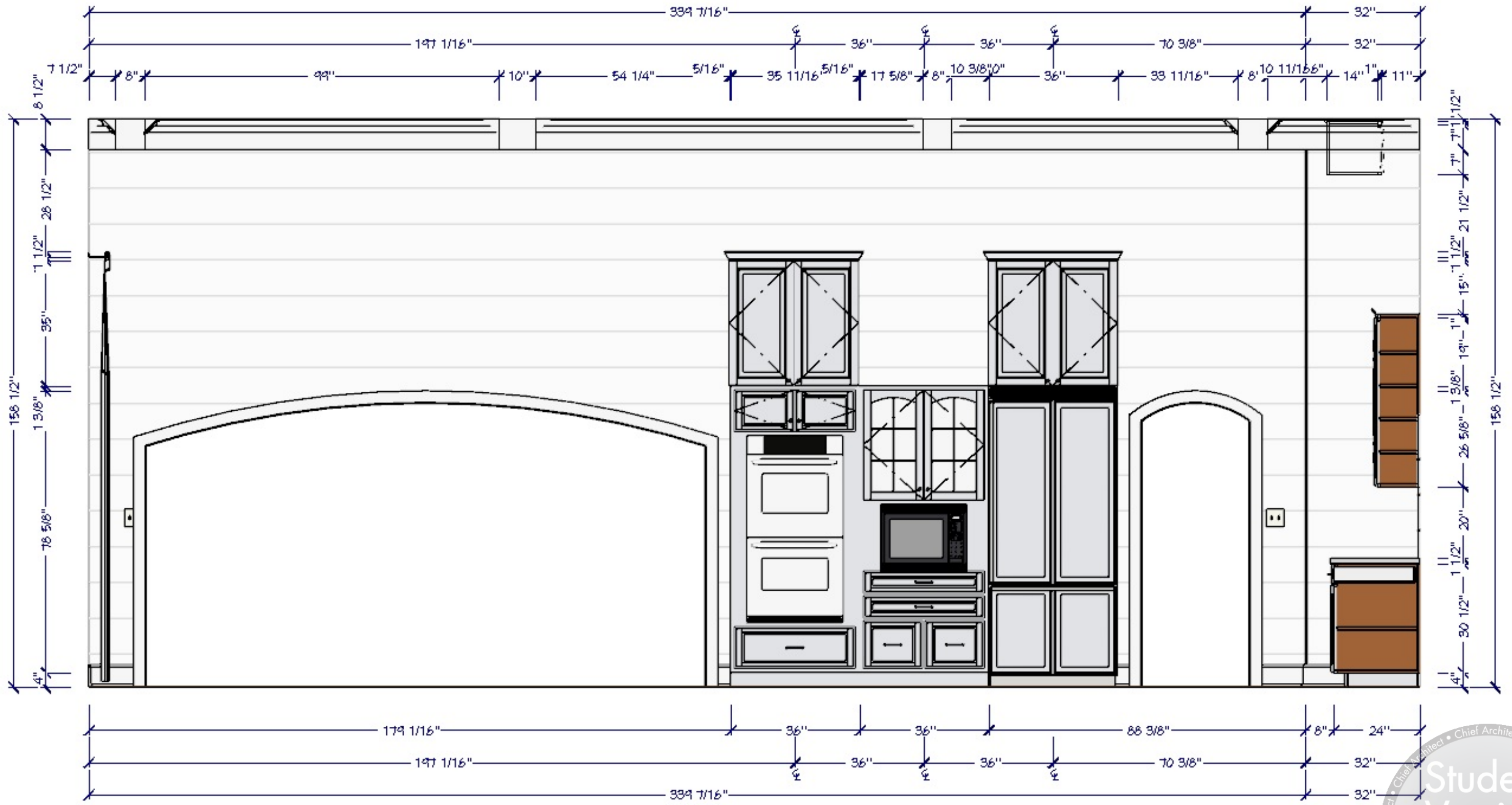
**CENTURY COLLEGE**  
 3300 CENTURY AVE N  
 WBL, MN 55110

DESIGNED FOR  
 KATE APABLAZA  
 BY  
**NAME HERE**

**KBD 2020**  
**BASIC CAD**


	DATE	BY
DWN		
REV		

Student Version  
 Not for Construction Documents  
 SCALE SEE VIEW  
 SHEET # **4**  
 DATE



**CENTURY COLLEGE**  
**3300 CENTURY AVE N**  
**WBL, MN 55110**

DESIGNED FOR  
**KATE APABLAZA**  
 BY  
**NAME HERE**

**KBD 2020**  
**BASIC CAD**

	DATE	BY
DWN		
REV		

SCALE SEE VIEW  
Applicable on Arch & Floor

Not for Construction Document

DATE

SHEET #  
**5**

