

**PROPOSED KITCHEN DESIGN FOR SHAWN AND JALEN HILL
CANNON BEACH, OREGON**

DESIGN STATEMENT:

The primary design challenge of this space was to give the Hill's a large modern kitchen that would accommodate their large extended family and friends that visit during family gatherings. They wanted a modern, coastal look with organic/biophilic elements in the design. Jalen loves cooking so I wanted a space that inspired her to be in the kitchen by taking advantage of the coastal views with many windows. Because they want a clean kitchen with ample storage to accommodate their cooking equipment I needed to design special spaces where they could hide things away including a large pantry. The original size of the kitchen had to be remodeled to accommodate these needs.



DRAWINGS:

- | | | |
|--------------------------------|-----------------------|--------------------------|
| 1- TITLE PAGE/DESIGN STATEMENT | 10- ELEVATIONS | 19- PERSPECTIVE |
| 2- FLOORPLAN: LOWER WINDOWS | 11- ELEVATIONS | 20- PERSPECTIVE |
| 3- FLOORPLAN SPECIFICATIONS | 12- ELEVATIONS | 21- PERSPECTIVE |
| 4- FLOORPLAN: UPPER WINDOWS | 13 -ELEVATIONS PANTRY | 22- PERSPECTIVE |
| 5- CONSTRUCTION PLAN | 14- PERSPECTIVE | 23- PERSPECTIVE |
| 6- MECHANICAL PLAN | 15- PERSPECTIVE | 24-29 PRESENTATION BOARD |
| 7- ELEVATIONS | 16- PERSPECTIVE | |
| 8- ELEVATIONS | 17- PERSPECTIVE | |
| 9- ELEVATIONS | 18- PERSPECTIVE | |

Proposed Design Solution:

Functionality:

The original space needed to be enlarged by removing walls to increase the footprint of the kitchen, sight-lines and flow into the dining room accommodating the clients' goals for hosting large family gatherings. A pantry was incorporated for extra storage for food and appliances since the clients enjoy the culinary arts. Windows were enlarged to take advantage of the spectacular coastal views. New clerestory windows were added to add natural light and visual dimension to the indoor kitchen/dining space. Ceiling was heightened to 125" high to accommodate the clerestory windows creating a sense of height and expansiveness overall to the kitchen space. Flow through all these areas was increased for client's desire to entertain so three different dining areas, breakfast nook, island seating, dining table were created to spread out the guests. Kitchen/Dining space is designed with surfaces which allow easy to clean ability knowing that dogs and children will be constantly in the space.

Style/Aesthetics:

The style here is Coastal meets Industrial Modern. Popular features of 2022 are the farmhouse sink, the quartz countertops, microwave drawers, induction stoves and appliance garages. The black windows are very popular modern trend today. Paint colors are all calming and tranquil incorporating neutrals like greige, light blue and soft white on the walls. Natural wood dining furniture is modern in style from West Elm or Pottery Barn. Lots of natural light from the windows gives the space access to the stunning views of the Oregon coastline. The art on the walls is coastal inspired by the local artists and photographers of the Oregon Coast. Space designed to support entertaining for large parties.

Sustainability:

Benjamin Moore Paint, "Aura", is sustainable with zero VOCs and a certification as eco-friendly. Ceiling Design uses locally sourced Douglas fir trees for the wood on the ceiling. 100% recyclable. Cement floors are all natural, ecological and sustainable source of local limestone, sand and clay. Cambria Quartz countertops are also 100% natural material, recyclable, and sustainable source of minerals. Refrigerator, dishwasher and microwave are all energy star certified.



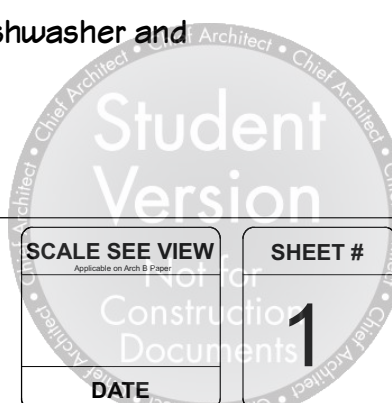
DESIGNED FOR
Shawn & Jalen Hill
BY
KATE APABLAZA

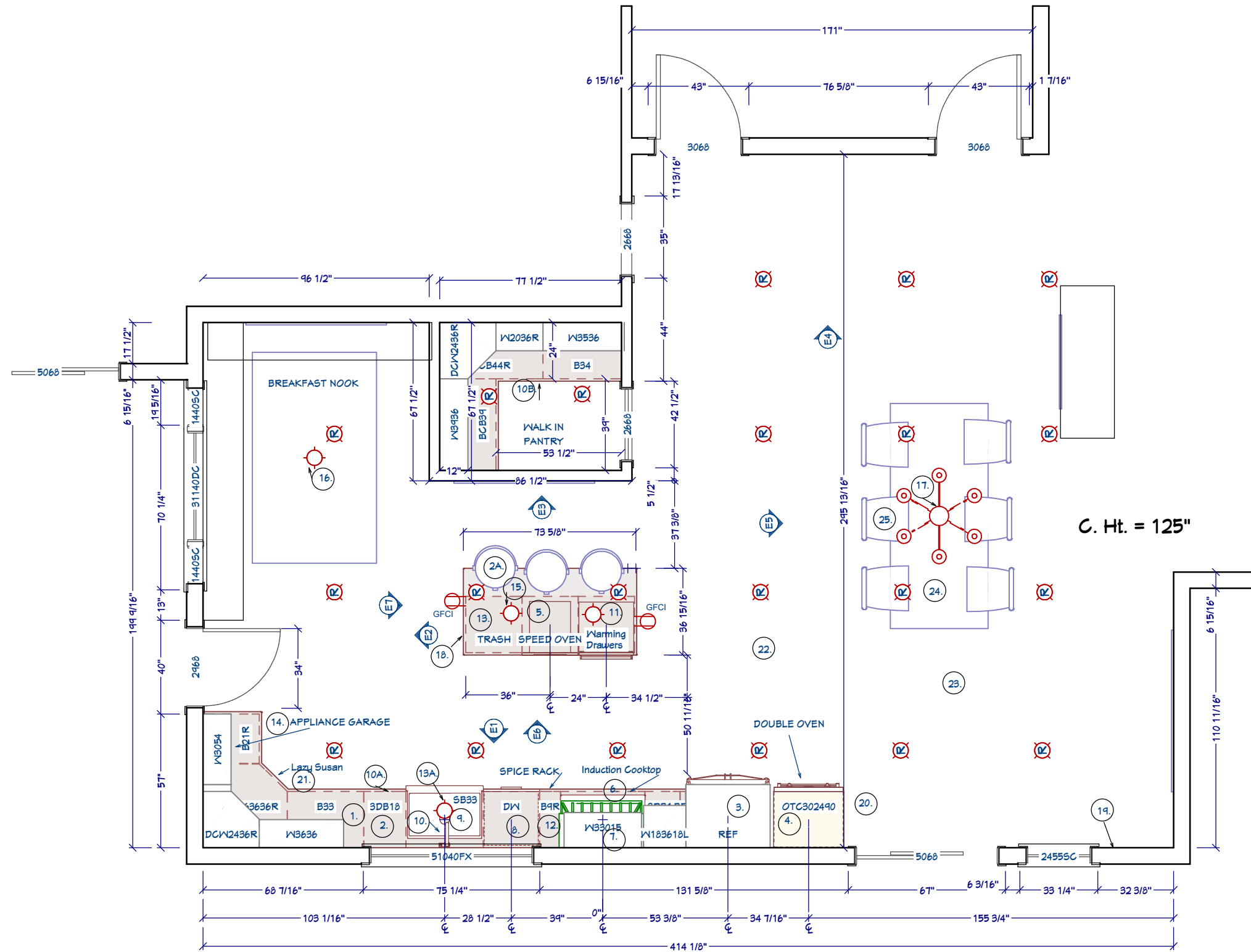
**DESIGN COMPETITION
FINAL PROJECT
KITCHEN**

**TITLE PAGE
DESIGN STATEMENT**

| | DATE | BY |
|-----|---------|----|
| DWN | 4/23/22 | |
| REV | | |
| | | |
| | | |
| | | |

SCALE SEE VIEW
SHEET #
1





2
2 KITCHEN FLOORPLAN
SCALE 1/4" = 1'-0"



DESIGNED FOR
Shawn & Jalen Hill
BY
KATE APABLAZA

**DESIGN COMPETITION
FINAL PROJECT
KITCHEN**

**KITCHEN FLOOR PLAN
(Lower Windows)
SPECS NUMBERED**

| | DATE | BY |
|-----|---------|----|
| DWN | 4/23/22 | |
| REV | | |
| | | |
| | | |
| | | |

| SCALE SEE VIEW | SHEET # |
|---------------------------|---------|
| 1/4" Instruction Document | 2 |
| DATE | |

KITCHEN SPECIFICATIONS

1. Crestwood Cabinetry, Silverton Door Style
2. Cambria USA, All Countertops, Island, Pantry Inverness Frost.
- 2A. WILLIAM SONOMA HOME: Trevor Counter Stool, Performance Basketweave in "Natural", Heritage Grey Finish.
3. FISHER PAYKEL, French Door Ice & Water Refrigerator, Model: RF201AGUSX1 N, D: 27 3/8" x W: 35 7/16" x H: 70
4. FISHER PAYKEL: 30" Double Wall Oven, D: 23 15/16" x W: 29 3/4" x H: 48 7/16" Model: WODY230
FISHER PAYKEL: 24" CONTEMPORARY CONVECTION SPEED OVEN, Dimensions: H 18" x W 23.5" x D 22.5" Model: OM24NDB1
5. FISHER PAYKEL 36" Contemporary Induction Cooktop, D: 20 7/8" x W: 35 7/16" x H: 3 11/16", Model: CI365DTB4
7. WAYPOINT: 36" Tapered Range Hood, 600 CFM, Liner included: Dimensions 35 15/16" wide x 7" deep x 24" high", Model: RH3624 T
8. FISHER PAYKEL: Stainless Steel Double DishDrawer™ Tall with Recessed Handle, D: 22 9/16" x W: 23 9/16" x H: 34 - 36 3/8" Model: DD24DCTX9 N
9. KOHLER: Whitehaven: Undermount Single-bowl Farmhouse Kitchen Sink with tall apron, W: 36" x H: 9" x D 21". Model: K-6489
10. KOHLER: Artifacts Touchless Sink Faucet: Polished Chrome, H: 17 5/8" Model: K-29709-CP
- 10A. TOP KNOBS: PULL: ELLIS COLLECTION- DAVENPORT PULL 7 9/16 INCH (C-C) BRUSHED SATIN NICKEL Model: TK3024BSN
- 10B. TOP KNOBS: PANTRY KNOB: ELLIS COLLECTION- ELLIS KNOB 1 1/4 INCH BRUSHED SATIN NICKEL, MODEL: TK3000BSN
11. KITCHENAID: 24 in. Slow Cook Warming Drawer in Stainless Steel, W: 22.5" D" 24" H 10.25" MODEL: KOWT100E
12. WELLBORN CABINET, Base Spice Rack Cabinet Model: BSR9 9" W
13. FISHER PAYKEL: 20" Double Trash/ Recycle Bin, Model TB1-20, D: 25" x W: 20 5/16" x H: 29 1/8"
- 13A. LAMPSPLUS: Possini Euro Ebbets 18 1/4" Wide Chrome Round Pendant Light: Style # 9H360
14. WELLBORN CABINET, Appliance Garage, Model W3054ADR, D: 12" x W 30" x H: 54"
15. POTTERY BARN: Natural Woven Pendant Lights, 13.25" W x 10.25" H
16. SHADES OF LIGHT: CLASSIC DOME SHADE PENDANT LIGHT WITH CHAIN – LARGE, Pewter, 17"Hx14"Wx14"D
17. ROSILAND WHEELER, 8 LIGHT IRON FARMHOUSE CHANDELIER, BLACK, 14.1" H x 37.4" W x 37.4" D
18. BENJAMIN MOORE PAINT COLOR: Woodlawn Blue, Island and Walls, Pantry Door,
19. BENJAMIN MOORE, PAINT COLOR, Oxford White, Walls
20. BENJAMIN MOORE PAINT COLOR, Balboa Mist, All Wall Cabinets & Base Cabinets.
21. WELLBORN CABINETS, "Lazy Susan" DIAGONAL CORNER SINK BASE CABINETS WITH FULL HEIGHT DOORS AND WOOD SPIN TRAYS, Model DCSB36FHST, 36' W x 36"D
22. FLOOR: Concrete Floor, White, Natural Look, Semi-Gloss Sealer.
CEILING: PNW BARNWOOD SUPPLY: Reclaimed 1x4 Old-Growth CVG Douglas Fir T&G PNW Barn Wood planks, 3.25" face. Locally sourced reclaimed old growth wood from the Douglas Fir tree, native to Oregon.
23. DINING TABLE: WEST ELM: Farrow Communal Table, Driftwood on Oak, 120" L
24. DINING CHAIR: POTTERY BARN: Beale Velvet Dining Chair



DESIGNED FOR
Shawn & Jalen Hill
BY
KATE APABLAZA

DESIGN COMPETITION
FINAL PROJECT
KITCHEN

FLOOR PLAN
SPECIFICATIONS

| | DATE | BY |
|-----|---------|----|
| DWN | 4/23/22 | |
| REV | | |
| | | |
| | | |

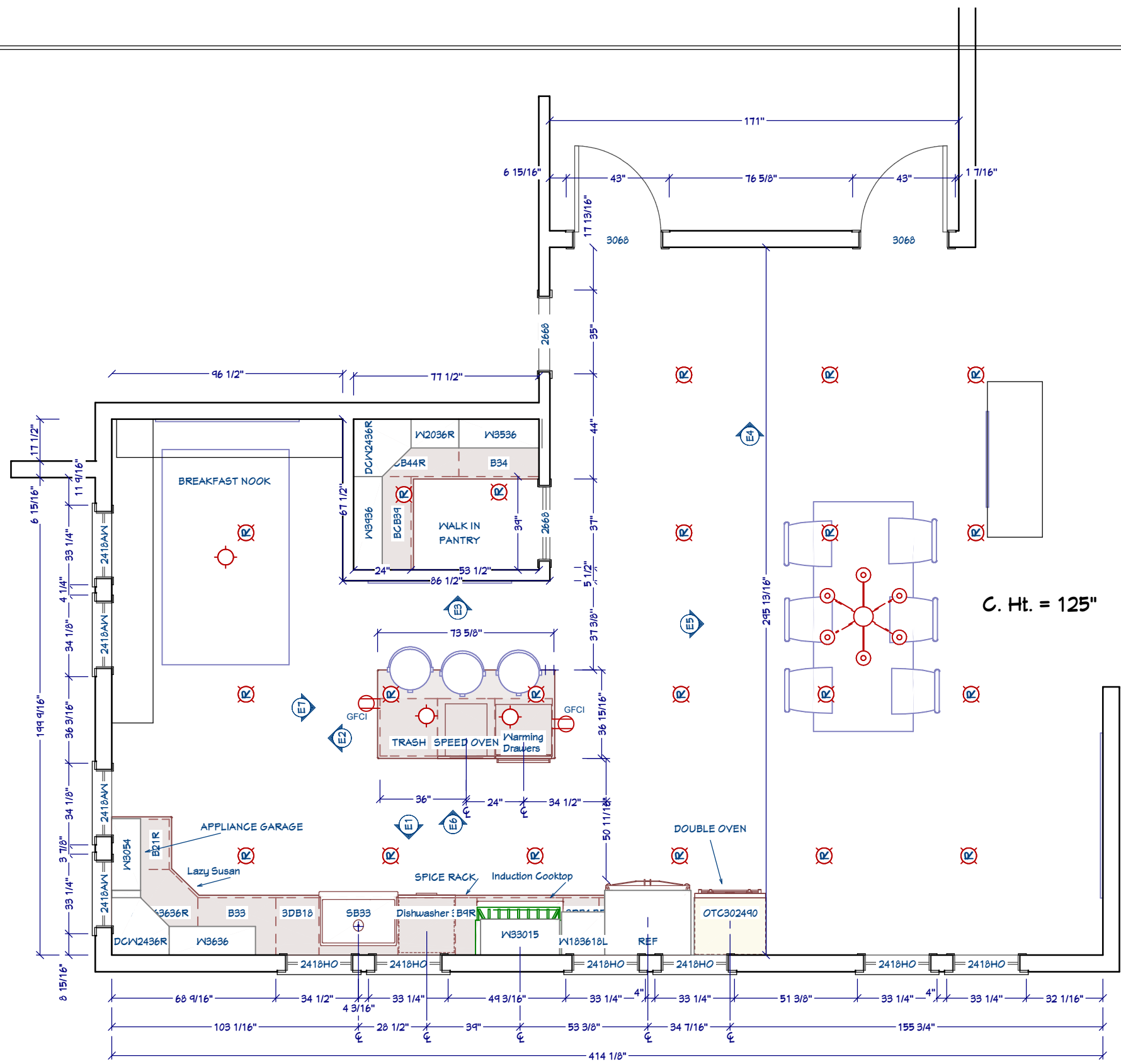
Student Version

SCALE SEE VIEW
Applicable on Arch B Paper

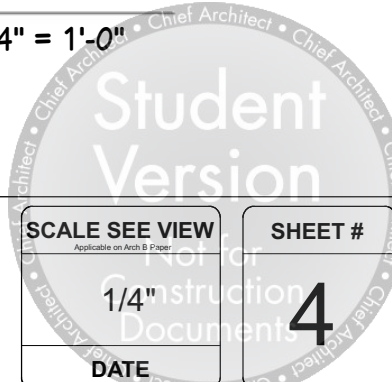
Not for Construction Documents

DATE

SHEET #
3



4
2 **KITCHEN FLOORPLAN**
SCALE 1/4" = 1'-0"



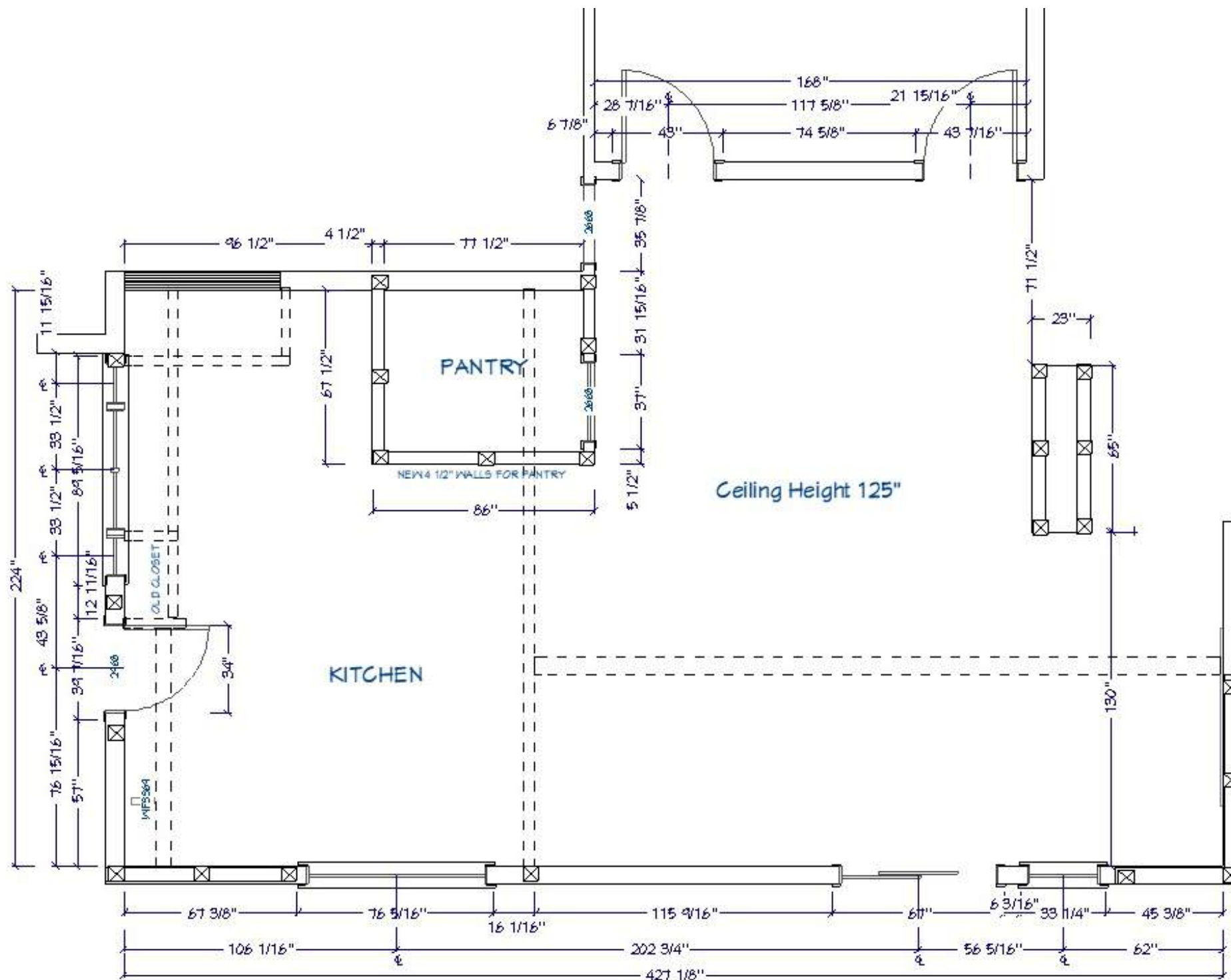
DESIGNED FOR
Shawn & Jalen Hill
BY
KATE APABLAZA

DESIGN COMPETITION
FINAL PROJECT
KITCHEN



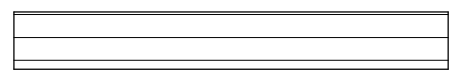
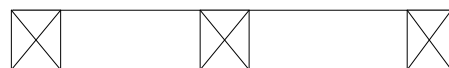
KITCHEN
FLOOR PLAN
(Upper Windows)

| DWN | DATE | BY |
|-----|----------------|----|
| REV | 4/23/22 | |
| | | |
| | | |
| | | |

| SCALE SEE VIEW | SHEET # |
|----------------|----------|
| 1/4" | 4 |
| DATE | |



CONSTRUCTION PLAN LEGEND

-  EXISTING WALL
-  WALL REMOVED
-  CLOSED OPENING
-  NEW STUD WALL

5
5 CONSTRUCTION PLAN
 SCALE 1/4" = 1'-0"

Student Version

SCALE SEE VIEW

1/4" Instruction Document

SHEET # **5**

DATE



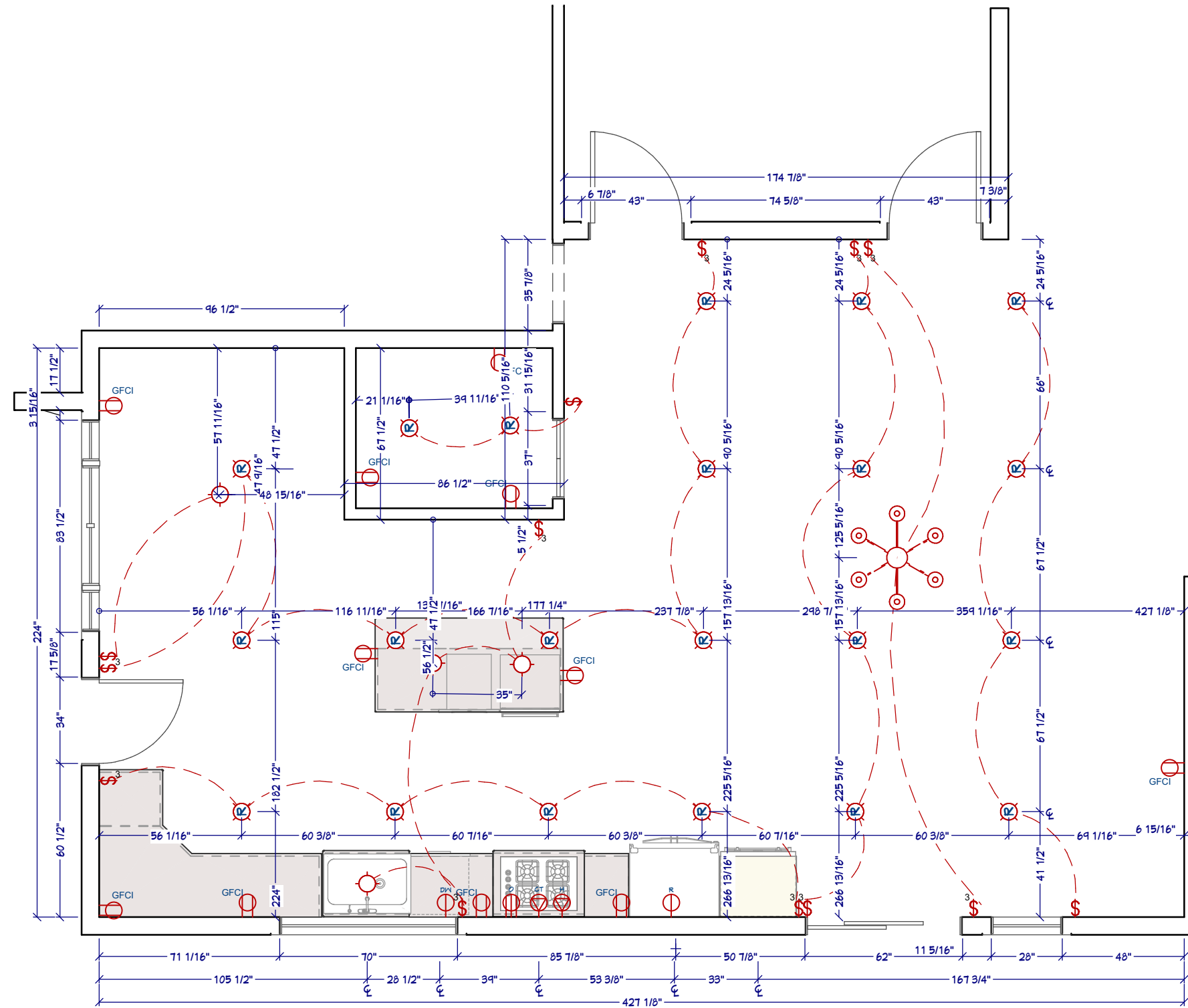
DESIGNED FOR
Shawn & Jalen Hill

BY
KATE APABLAZA

DESIGN COMPETITION
**FINAL PROJECT
 KITCHEN**

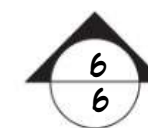
CONSTRUCTION PLAN
LOWER WINDOWS

| | DATE | BY |
|-----|---------|----|
| DWN | 4/23/22 | |
| REV | | |
| | | |
| | | |

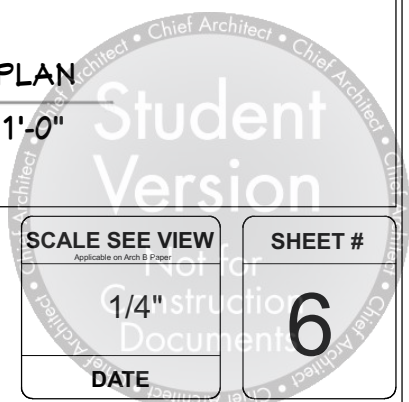


MECHANICAL PLAN LEGEND

| ELECTRICAL SCHEDULE | |
|---------------------|-----------------------|
| | CANDELABRA CHANDELIER |
| | DISHWASHER |
| | DWM |
| | GFCI |
| | GAS COOKTOP |
| | HOOD W/ VENT |
| | OLD SOUTH PENDANT |
| | OVEN |
| | RECESSED DOWN LIGHT 6 |
| | REFRIGERATOR |
| | SEASIDE PENDANT |
| | SINGLE POLE |
| | THREE WAY |
| | CELIA DRUM PENDANT |



MECHANICAL PLAN
SCALE 1/4" = 1'-0"



DESIGNED FOR
Shawn & Jalen Hill
BY
KATE APABLAZA

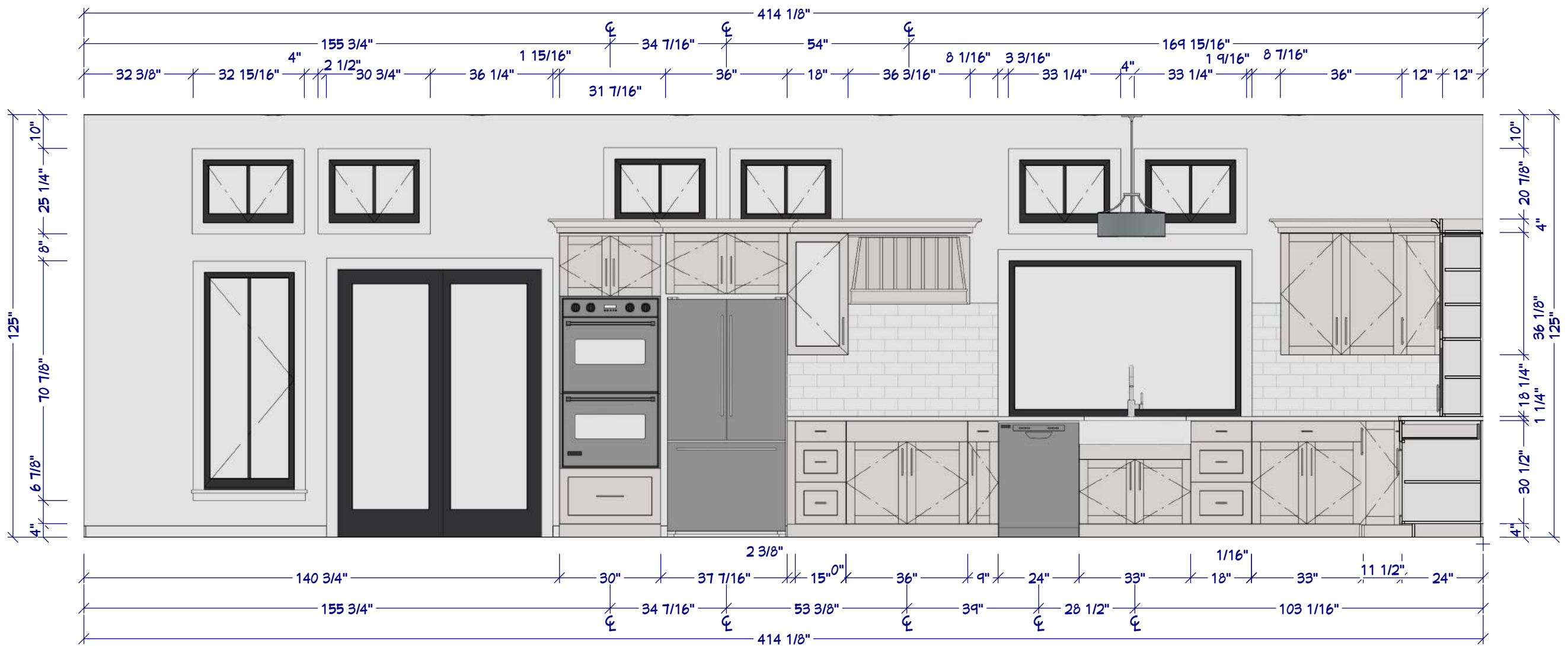
DESIGN COMPETITION
FINAL PROJECT
KITCHEN

MECHANICAL PLAN

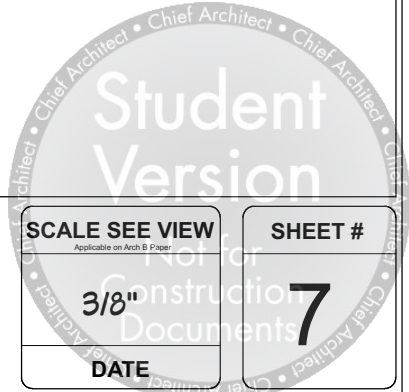
| DWN REV | DATE | BY |
|---------|---------|----|
| | 4/23/22 | |
| | | |
| | | |
| | | |

SCALE SEE VIEW
Applicable on Arch B Paper
1/4" construction
DATE

SHEET #
6



7 KITCHEN ELEVATION
2 SCALE 3/8" = 1'-0"



DESIGNED FOR
Shawn & Jalen Hill
BY
KATE APABLAZA

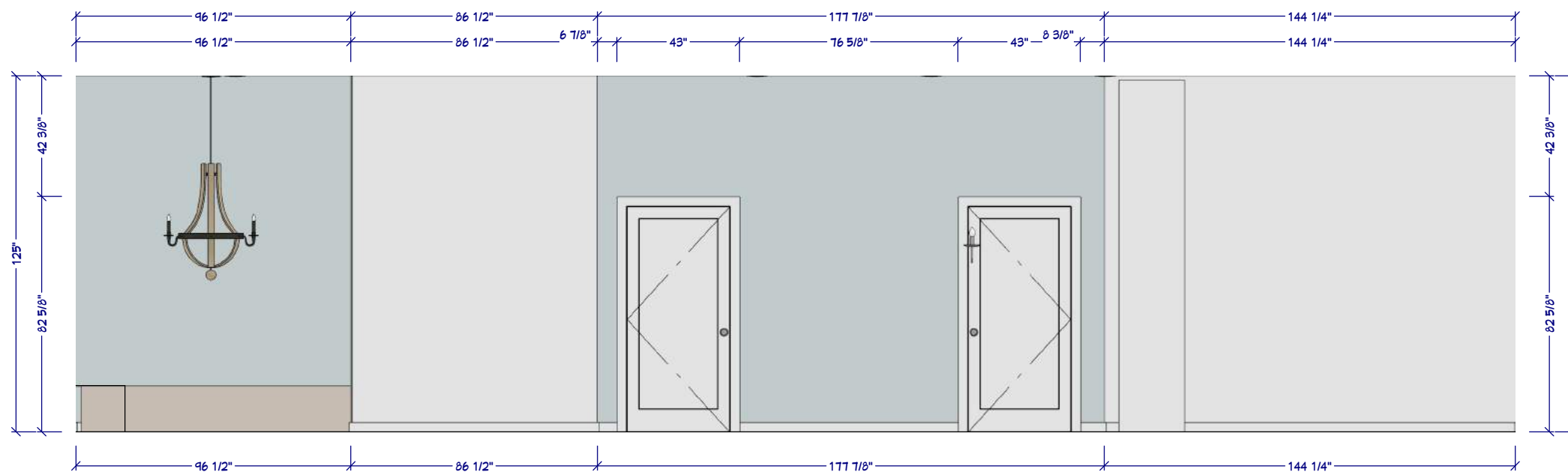
DESIGN COMPETITION
FINAL PROJECT
KITCHEN

ELEVATIONS

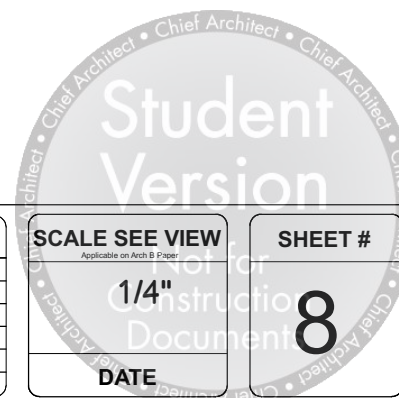
| DWN REV | DATE | BY |
|------------|---------|----|
| | 4/23/22 | |
| | | |
| | | |
| | | |

SCALE SEE VIEW
3/8"
DATE

SHEET #
7




KITCHEN ELEVATION
 SCALE 1/4" = 1'-0"



DESIGNED FOR
Shawn & Jalen Hill
 BY
KATE APABLAZA

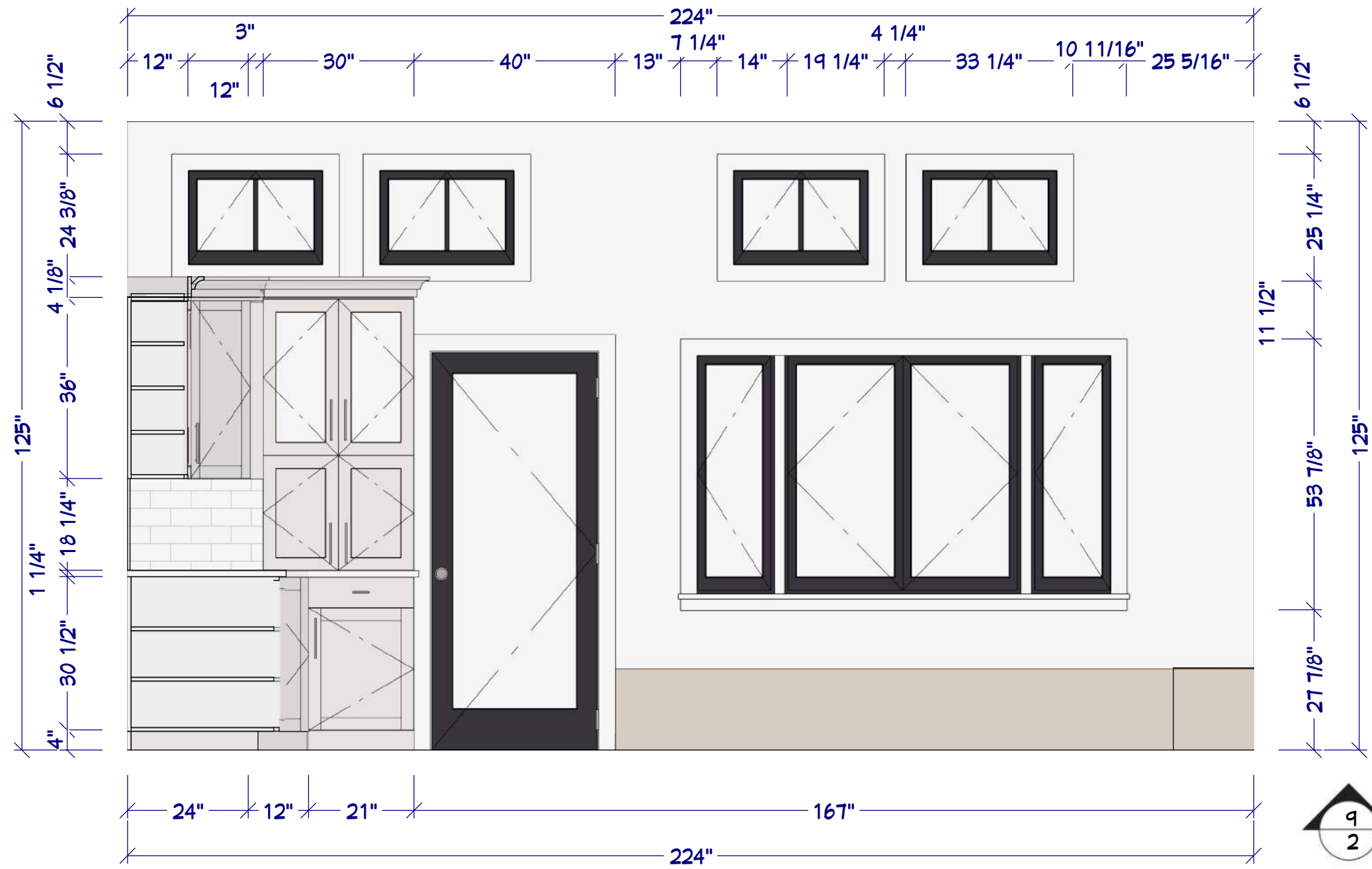
DESIGN COMPETITION
FINAL PROJECT
KITCHEN

ELEVATIONS

| DWN REV | DATE | BY |
|------------|----------------|----|
| | 4/23/22 | |
| | | |
| | | |
| | | |

SCALE SEE VIEW
 1/4"
 DATE

SHEET #
8



KITCHEN ELEVATION
 SCALE 1/2" = 1'-0"

Student
Version



DESIGNED FOR
 Shawn & Jalen Hill
 BY
 KATE APABLAZA

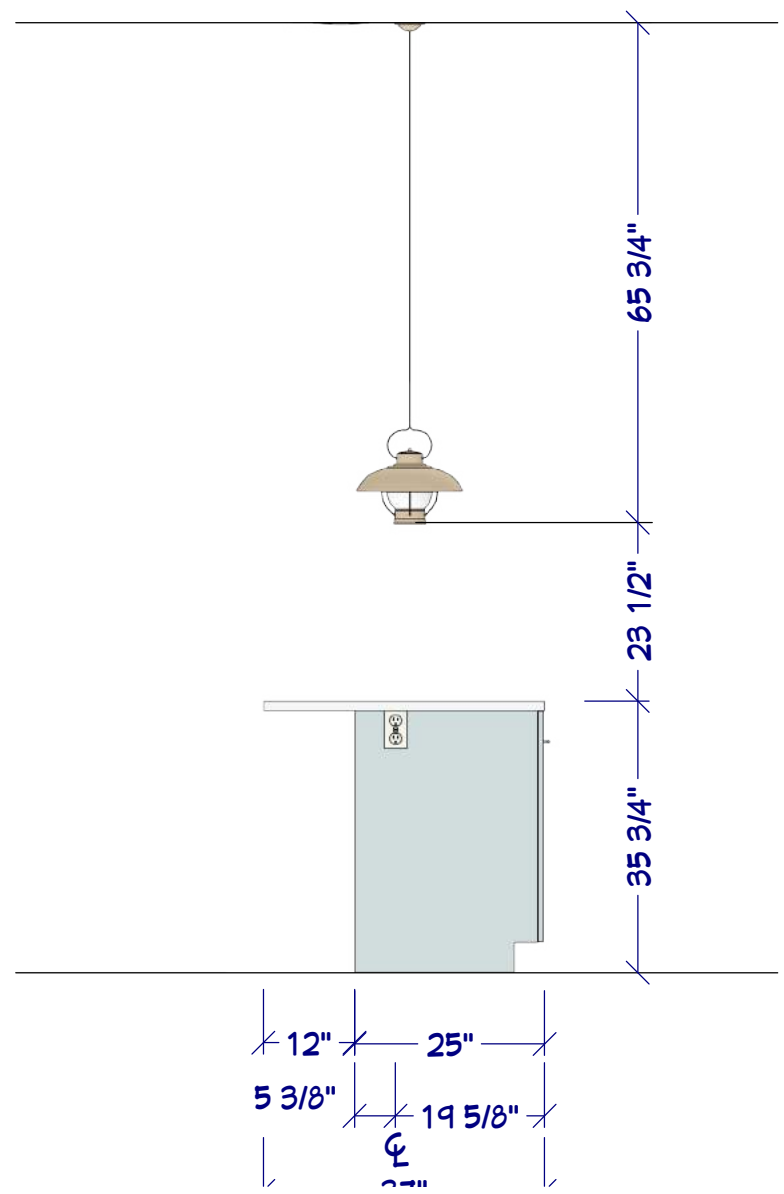
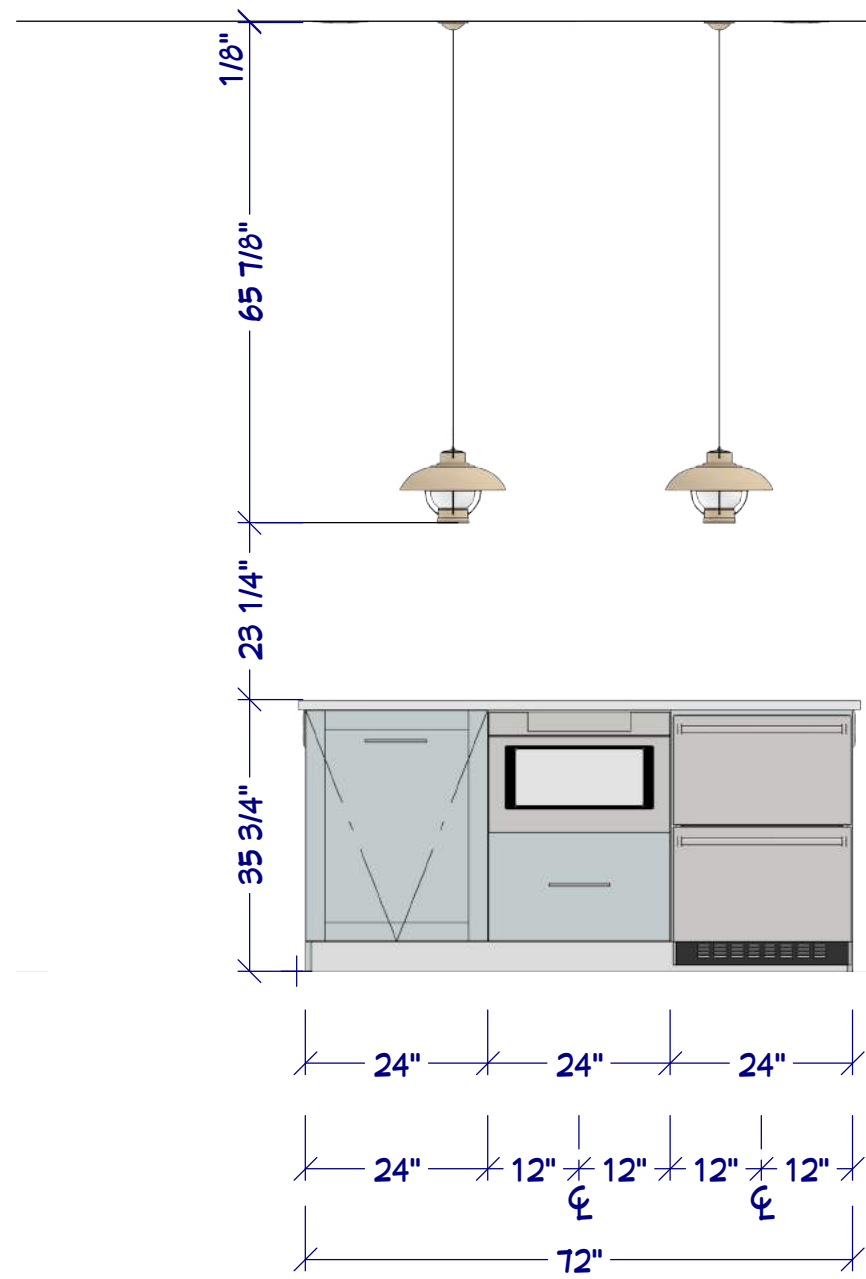
DESIGN COMPETITION
 FINAL PROJECT
 KITCHEN

ELEVATIONS

| DWN REV | DATE | BY |
|------------|---------|----|
| | 4/23/22 | |
| | | |
| | | |
| | | |

SCALE SEE VIEW
 1/2" Construction Document
 DATE

SHEET #
 9




10
2 KITCHEN ELEVATION
 SCALE 1/2" = 1'-0"

Student Version
 Not for Instructional Documents
 SCALE SEE VIEW
 SHEET # **10**
 DATE



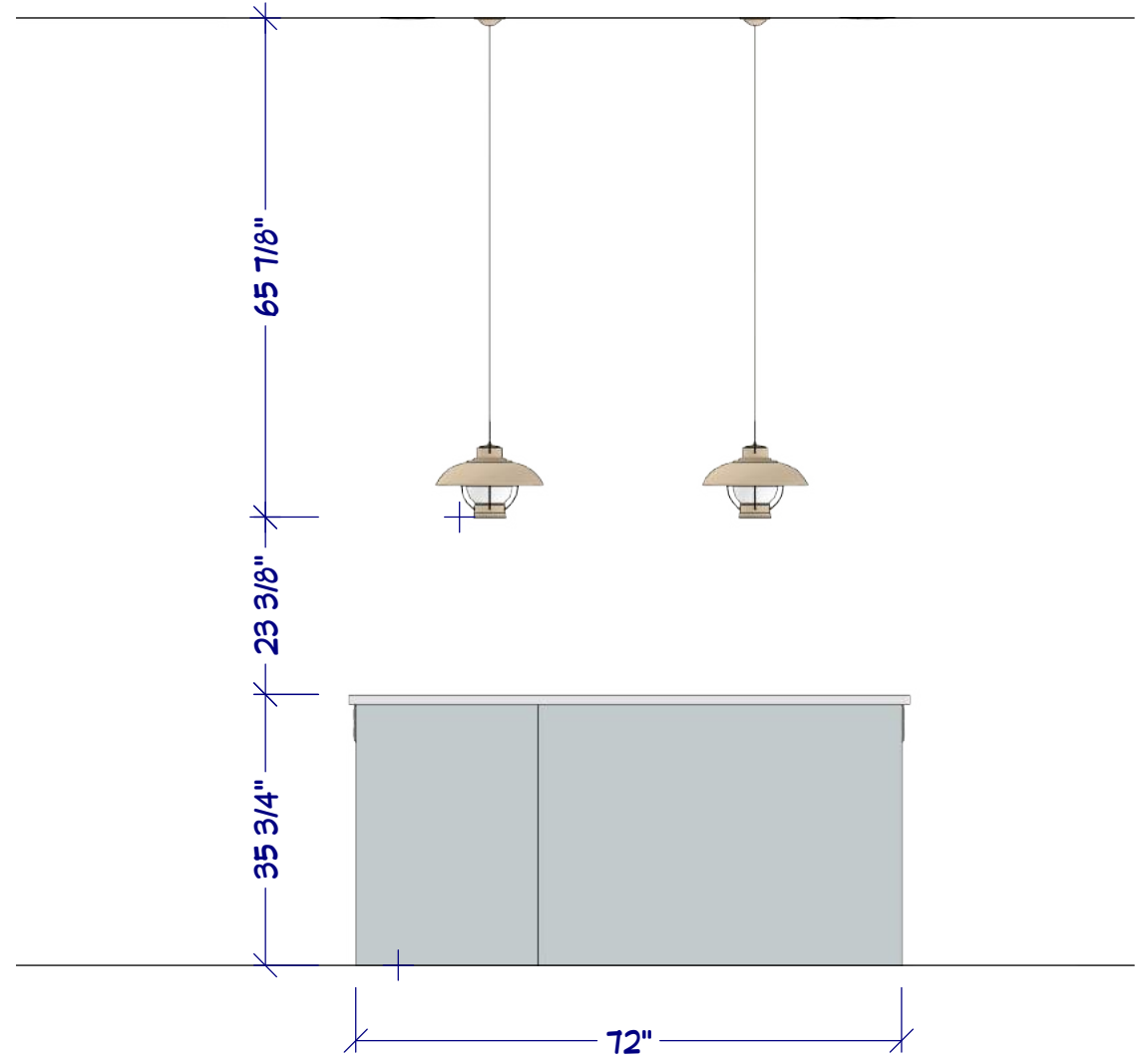
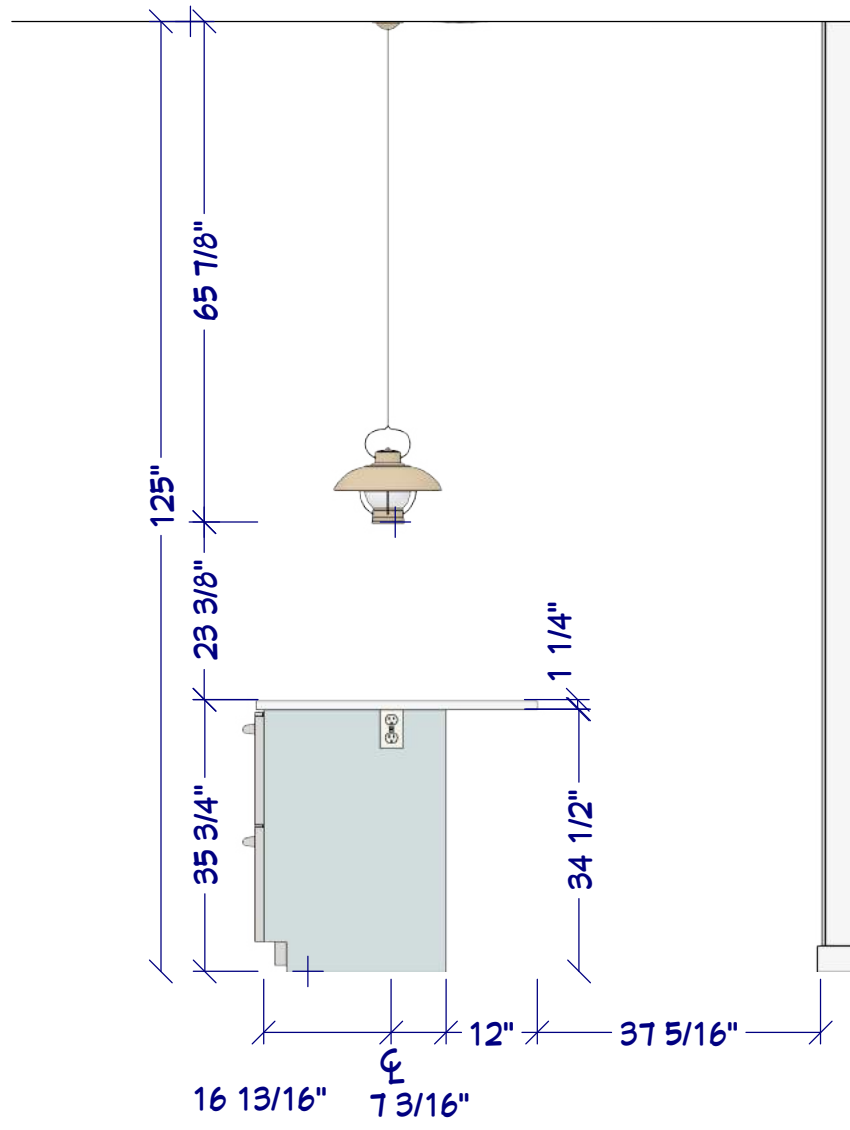
DESIGNED FOR
Shawn & Jalen Hill
 BY
KATE APABLAZA

DESIGN COMPETITION
 FINAL PROJECT
 KITCHEN

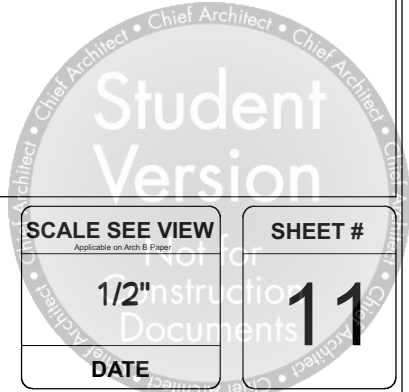
ISLAND
 ELEVATIONS

| | DATE | BY |
|-----|---------|----|
| DWN | 4/23/22 | |
| REV | | |
| | | |
| | | |

| SCALE SEE VIEW | SHEET # |
|----------------|---------|
| 1/2" | 10 |
| DATE | |




KITCHEN ELEVATION
 SCALE 1/2" = 1'-0"



DESIGNED FOR
Shawn & Jalen Hill
 BY
KATE APABLAZA

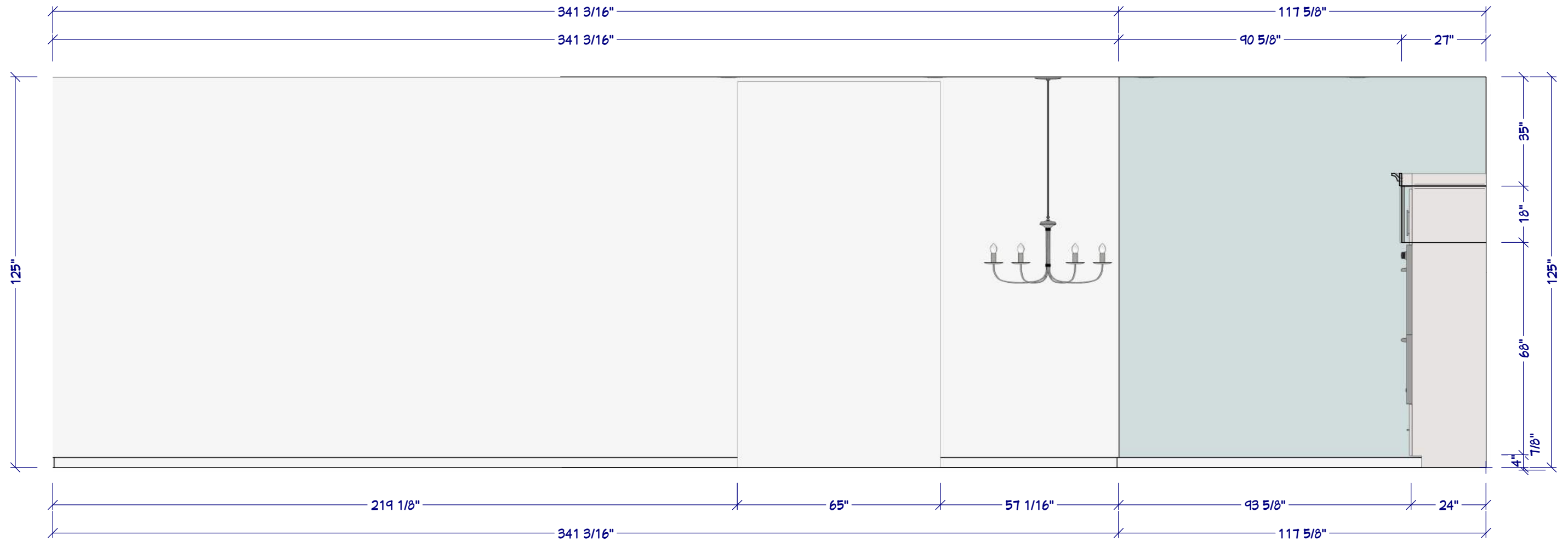
DESIGN COMPETITION
FINAL PROJECT
KITCHEN

ISLAND
ELEVATIONS

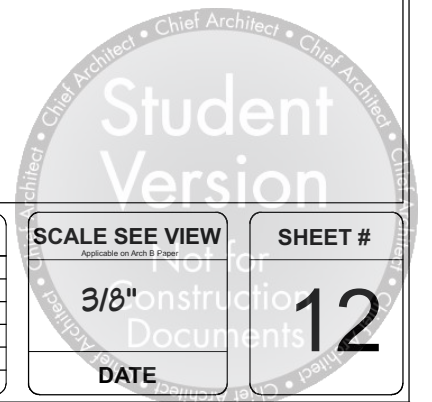
| | DATE | BY |
|-----|---------|----|
| DWN | 4/23/22 | |
| REV | | |
| | | |
| | | |

SCALE SEE VIEW
 1/2" Instructional Documents
 DATE

SHEET #
11




12
2 KITCHEN ELEVATION
 SCALE 3/8" = 1'-0"



DESIGNED FOR
 Shawn & Jalen Hill
 BY
 KATE APABLAZA

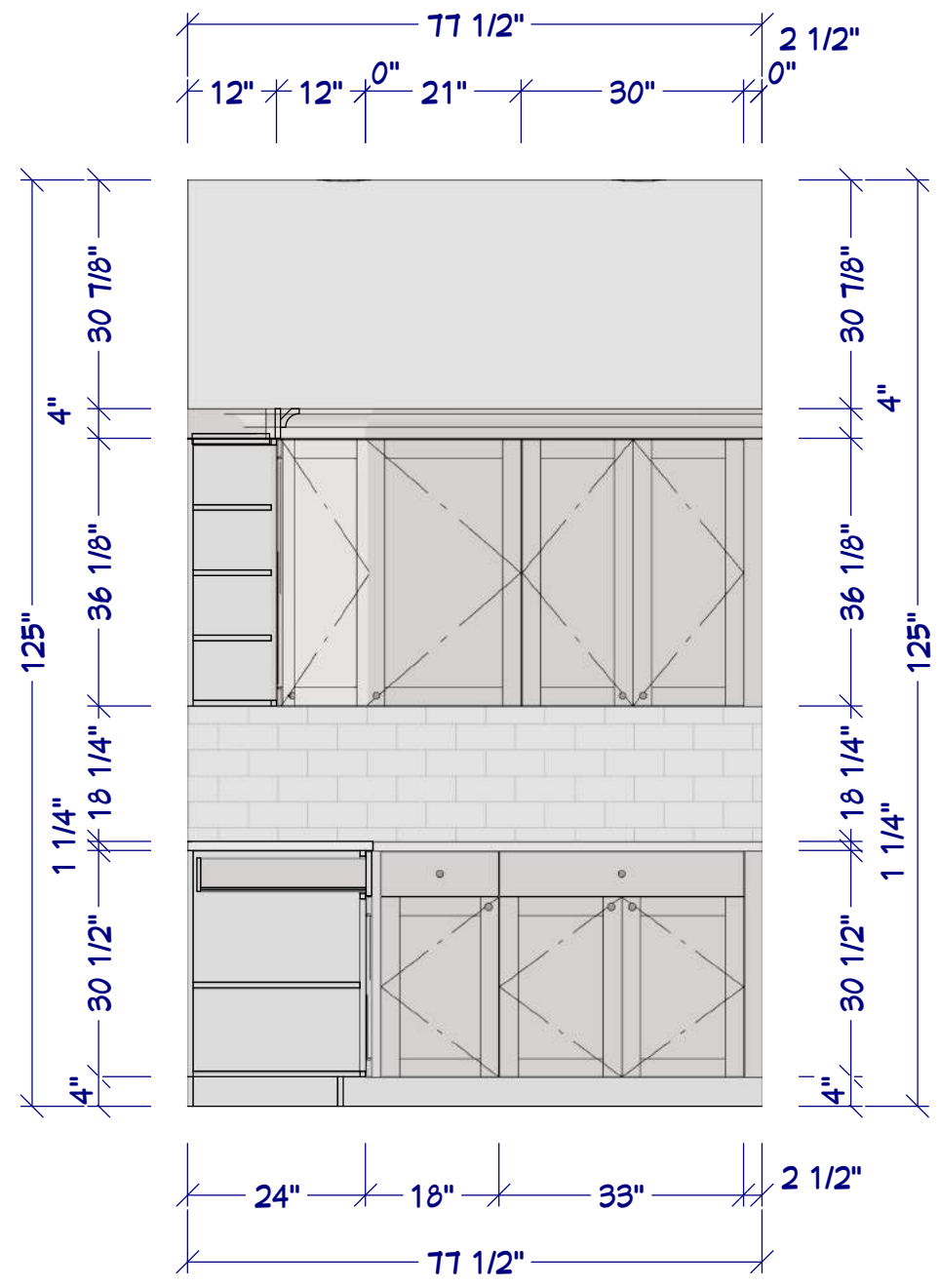
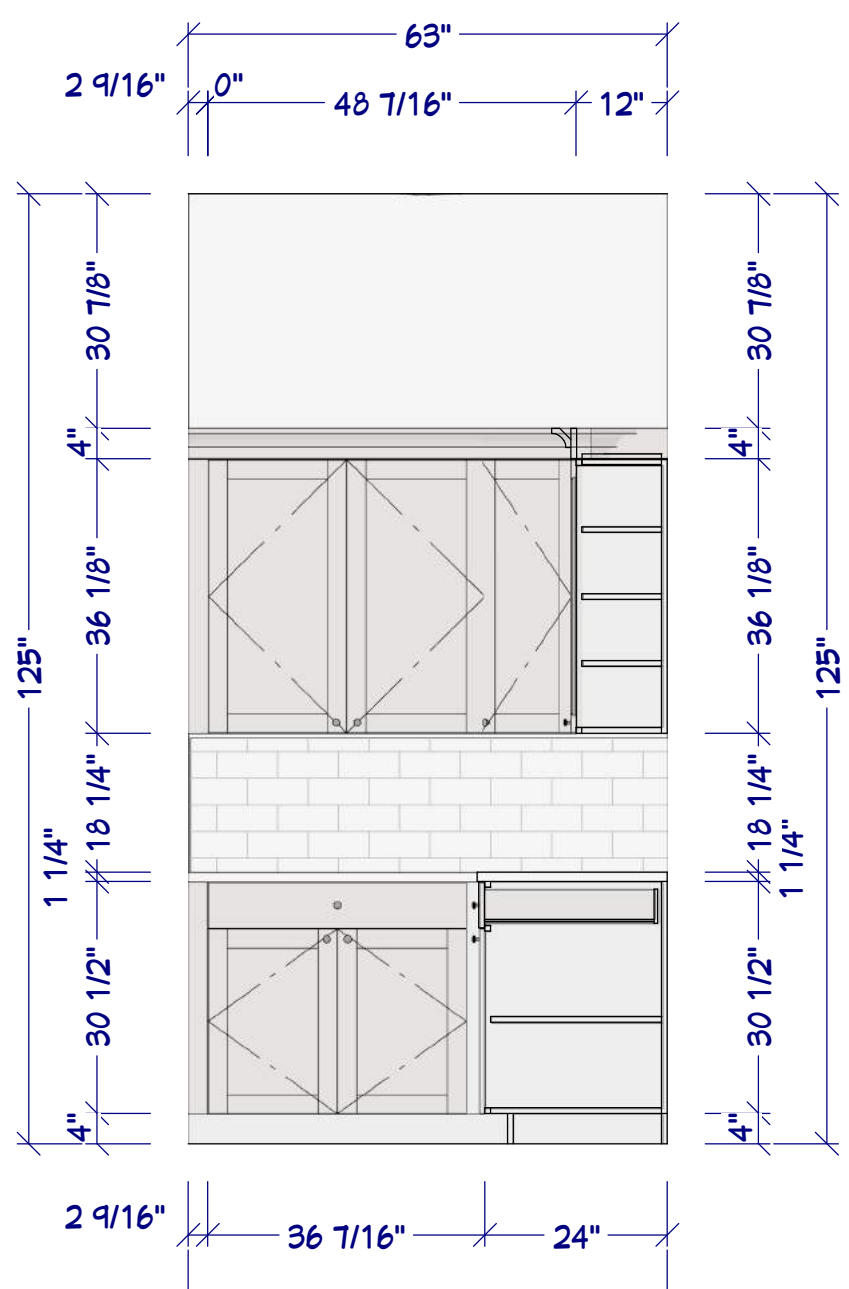
DESIGN COMPETITION
 FINAL PROJECT
 KITCHEN

ELEVATIONS

| | DATE | BY |
|-----|---------|----|
| DWN | 4/23/22 | |
| REV | | |
| | | |
| | | |

SCALE SEE VIEW
Applicable on Arch B Paper
 3/8"

SHEET #
 12




13
2 PANTRY ELEVATION
 SCALE 1/2" = 1'-0"

Student Version
 Not for Instructional Documents
 SCALE SEE VIEW
 DATE
 SHEET # **13**



DESIGNED FOR
Shawn & Jalen Hill
 BY
KATE APABLAZA

DESIGN COMPETITION
 FINAL PROJECT
 KITCHEN

PANTY
 ELEVATIONS

| DWN REV | DATE | BY |
|------------|---------|----|
| | 4/23/22 | |
| | | |
| | | |

| SCALE SEE VIEW | SHEET # |
|----------------|---------|
| 1/2" | 13 |
| DATE | |



Student Version
 Not for Construction Documents
 Student Version
 Not for Construction Documents
 DATE



DESIGNED FOR
 Shawn & Jalen Hill
 BY
 KATE APABLAZA

DESIGN COMPETITION
 FINAL PROJECT
 KITCHEN

PERSPECTIVES

| | DATE | BY |
|-----|---------|----|
| DWN | 4/23/22 | |
| REV | | |
| | | |
| | | |

SCALE SEE VIEW
Applicable on Arch B Paper
 SHEET #
 14



DESIGNED FOR
Shawn & Jalen Hill
 BY
KATE APABLAZA

**DESIGN COMPETITION
 FINAL PROJECT
 KITCHEN**

PERSPECTIVES

| | DATE | BY |
|-----|---------|----|
| DWN | 4/23/22 | |
| REV | | |
| | | |
| | | |

SCALE SEE VIEW
Applicable on Arch B Paper
 Not for
 Construction
 Documents
 DATE

SHEET #
15



Student Version
 Not for Construction Documents
 Student Version
 Not for Construction Documents
 SCALE SEE VIEW
 SHEET # 16



DESIGNED FOR
 Shawn & Jalen Hill
 BY
 KATE APABLAZA

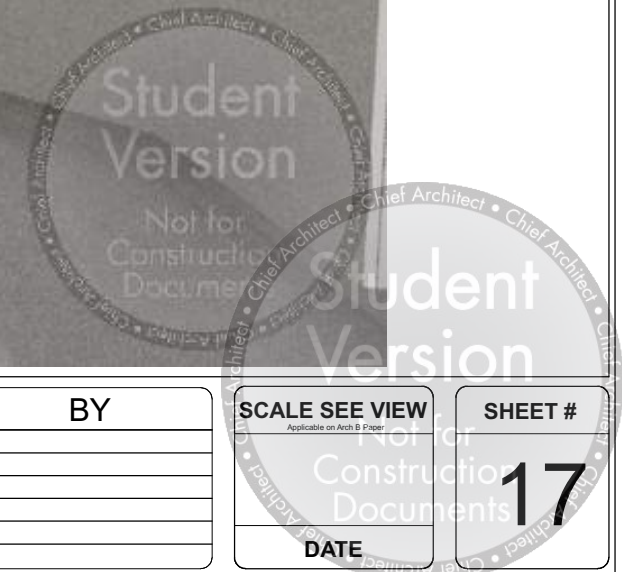
DESIGN COMPETITION
 FINAL PROJECT
 KITCHEN

PERSPECTIVES

| | DATE | BY |
|-----|---------|----|
| DWN | 4/23/22 | |
| REV | | |
| | | |
| | | |

SCALE SEE VIEW
Applicable on Arch B Paper
 DATE

SHEET #
 16



DESIGNED FOR
Shawn & Jalen Hill
 BY
KATE APABLAZA

**DESIGN COMPETITION
 FINAL PROJECT
 KITCHEN**

PERSPECTIVES

| | DATE | BY |
|-----|---------|----|
| DWN | 4/23/22 | |
| REV | | |
| | | |
| | | |

SCALE SEE VIEW
Applicable on Arch B Paper
 Not for
 Construction
 Documents
 DATE

SHEET #
17



Student Version
 Not for Construction Documents

Student Version
 Not for Construction Documents



DESIGNED FOR
Shawn & Jalen Hill

BY
KATE APABLAZA

**DESIGN COMPETITION
 FINAL PROJECT
 KITCHEN**

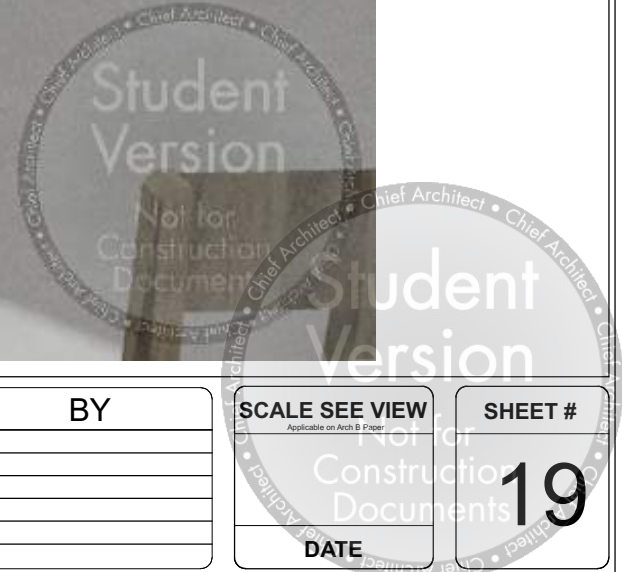
PERSPECTIVES

| | DATE | BY |
|-----|---------|----|
| DWN | 4/23/22 | |
| REV | | |
| | | |
| | | |

SCALE SEE VIEW
Applicable on Arch B Paper

DATE

SHEET #
18



DESIGNED FOR
Shawn & Jalen Hill
 BY
KATE APABLAZA

**DESIGN COMPETITION
 FINAL PROJECT
 KITCHEN**

PERSPECTIVES

| | DATE | BY |
|-----|---------|----|
| DWN | 4/23/22 | |
| REV | | |
| | | |
| | | |

SCALE SEE VIEW
Applicable on Arch B Paper
 DATE

SHEET #
19



Student Version
Not for Construction Documents

Student Version
Not for Construction Documents



DESIGNED FOR
Shawn & Jalen Hill

BY
KATE APABLAZA

**DESIGN COMPETITION
FINAL PROJECT
KITCHEN**

PERSPECTIVES

| | DATE | BY |
|------------|----------------|----|
| DWN REV | 4/23/22 | |
| | | |
| | | |
| | | |

SCALE SEE VIEW
Applicable on Arch B Page

DATE

SHEET #
20



Student Version
 Not for Construction Documents
 Student Version
 Not for Construction Documents



DESIGNED FOR
 Shawn & Jalen Hill
 BY
 KATE APABLAZA

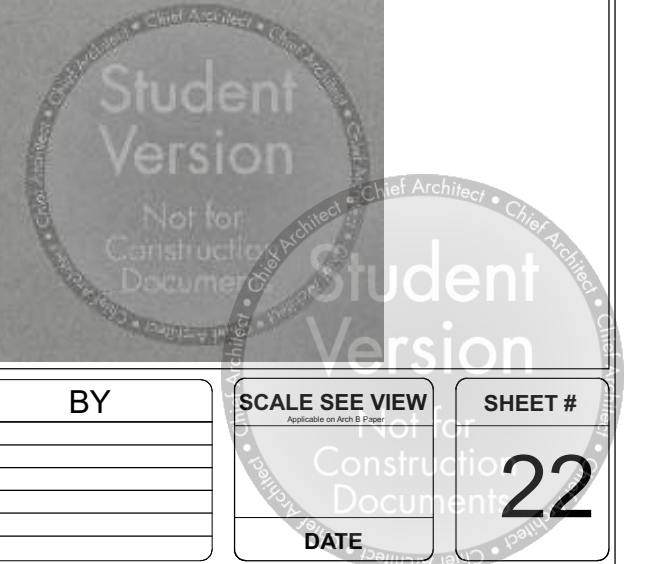
DESIGN COMPETITION
 FINAL PROJECT
 KITCHEN

PERSPECTIVES

| DWN REV | DATE | BY |
|------------|---------|----|
| | 4/23/22 | |
| | | |
| | | |
| | | |

SCALE SEE VIEW
Applicable on Arch B Page
 DATE

SHEET #
 21



DESIGNED FOR
Shawn & Jalen Hill
 BY
KATE APABLAZA

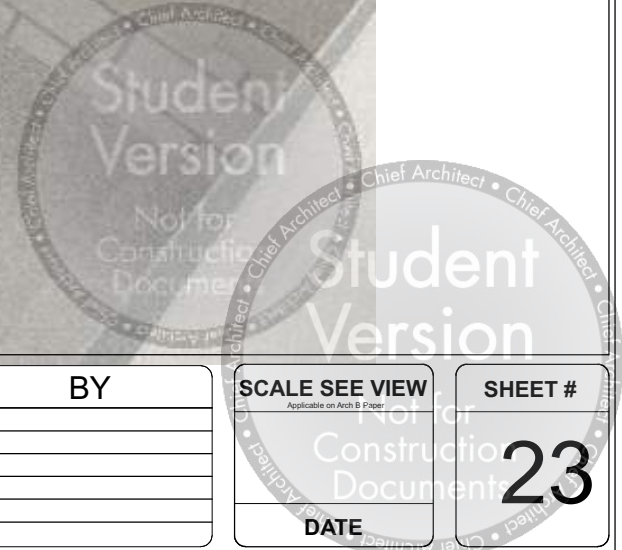
**DESIGN COMPETITION
 FINAL PROJECT
 KITCHEN**

PERSPECTIVES

| | DATE | BY |
|-----|---------|----|
| DWN | 4/23/22 | |
| REV | | |
| | | |
| | | |

SCALE SEE VIEW
Applicable on Arch B Page
 Not for
 Construction
 Documents
 DATE

SHEET #
22



DESIGNED FOR
Shawn & Jalen Hill
 BY
KATE APABLAZA

**DESIGN COMPETITION
 FINAL PROJECT
 KITCHEN**

**PANTRY
 PERSPECTIVE**

| | DATE | BY |
|-----|---------|----|
| DWN | 4/23/22 | |
| REV | | |
| | | |
| | | |

SCALE SEE VIEW
Applicable on Arch B Paper
 DATE

SHEET #
23

Hill Kitchen Presentation Board

by Kate Apablaza



DESIGNED FOR
Shawn & Jalen Hill
BY
KATE APABLAZA

DESIGN COMPETITION
FINAL PROJECT
KITCHEN

PRESENTATION
BOARD

| | DATE | BY |
|-----|---------|----|
| DWN | 4/23/22 | |
| REV | | |
| | | |
| | | |
| | | |

SCALE SEE VIEW

Applicable on Arch B Paper

Not for

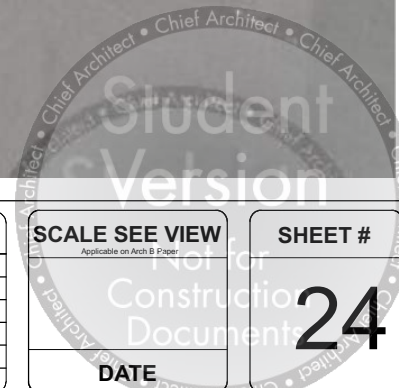
Construction

Documents

DATE

SHEET #

24



HILL COLOR PALETTE

COLOR SCHEME, White Walls, Light grey cabinets, Light Grey Concrete Floor, White Quartz Countertops, Teal Island, Brown Wood Ceilings, and Desaturated Brown Wood Furniture

45% Light Grey, 30% White, 15% Brown wood, 10% Teal



DESIGNED FOR
Shawn & Jalen Hill
BY
KATE APABLAZA

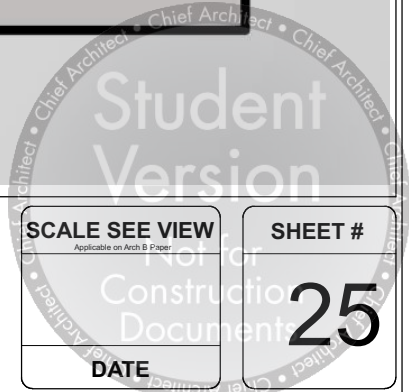
DESIGN COMPETITION
FINAL PROJECT
KITCHEN

PRESENTATION
BOARD

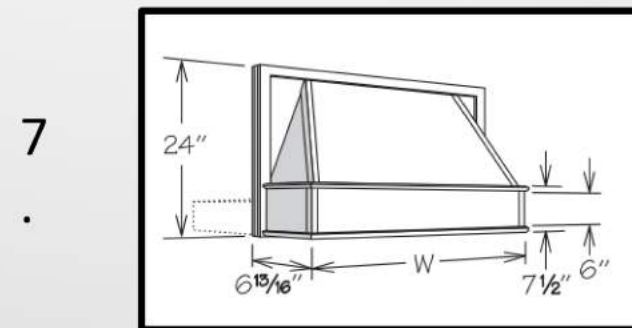
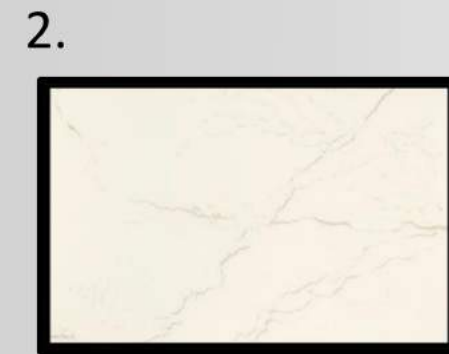
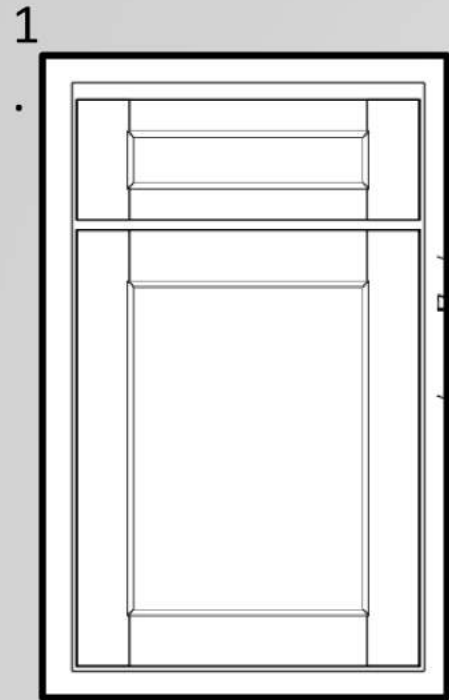
| | DATE | BY |
|-----|---------|----|
| DWN | 4/23/22 | |
| REV | | |
| | | |
| | | |

SCALE SEE VIEW
Applicable on Arch B Page
Not for Construction Documents
DATE

SHEET #
25



HILL KITCHEN PRESENTATION STYLE BOARD



DESIGNED FOR
Shawn & Jalen Hill
BY
KATE APABLAZA

DESIGN COMPETITION
FINAL PROJECT
KITCHEN

PRESENTATION
BOARD

| | DATE | BY |
|-----|---------|----|
| DWN | 4/23/22 | |
| REV | | |
| | | |
| | | |

Student
Version

SCALE SEE VIEW
Applicable on Arch B Paper

Not for
Construction
Documents

DATE

SHEET #
26

11.

HILL KITCHEN PRESENTATION STYLE BOARD

17.

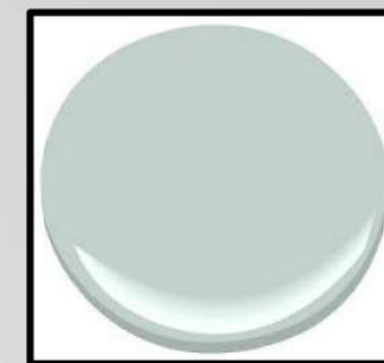
18..



13A.

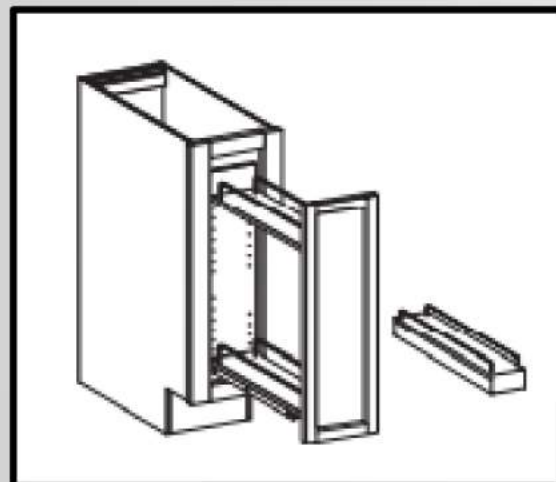
15.

16.

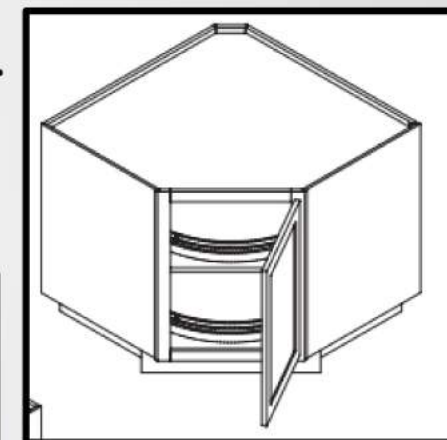


25.

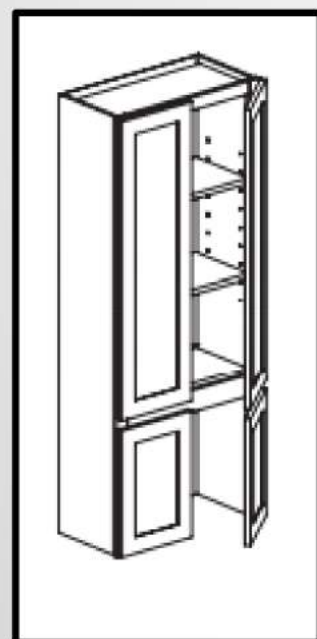
12.



21.



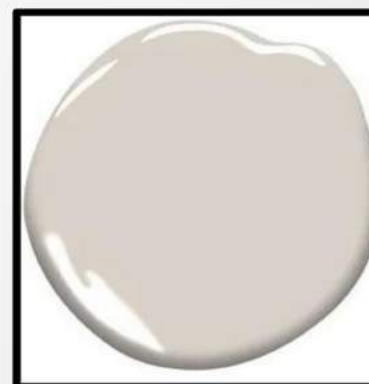
14.



19.



20.



23



13.



22.



24.



DESIGNED FOR
Shawn & Jalen Hill
BY
KATE APABLAZA

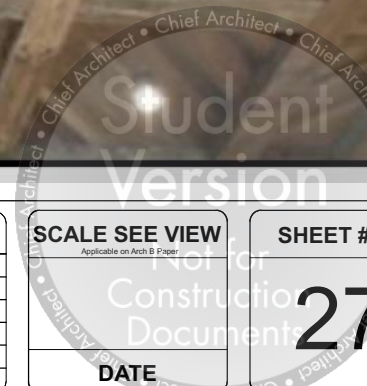
DESIGN COMPETITION
FINAL PROJECT
KITCHEN

PRESENTATION
BOARD

| DWN | DATE | BY |
|-----|---------|----|
| REV | 4/23/22 | |
| | | |
| | | |
| | | |

SCALE SEE VIEW
Not for
Construction
Documents
DATE

SHEET #
27



HILL KITCHEN SPECIFICATIONS

- 1.) CRESTWOOD CABINETRY, Silverton Door Style, painted in "Balboa Mist".
- 2.) CAMBRIA USA, Kitchen, Island & Pantry Countertops, "Inverness Frost".
- 2A.) WILLIAM SONOMA HOME: Trevor Counter Stool, Performance Basketweave in "Natural", Heritage Grey Finish.
- 3.) FISHER PAYKEL: French Door Ice & Water Refrigerator, D: 27 3/8" x W: 35 7/16" x H: 70 15/32, Model: RF201ACUSX1 N
- 4.) FISHER PAYKEL: 30" Double Wall Oven, D: 23 15/16" x W: 29 3/4" x H: 48 7/16" Model: WODY230 N
- 5.) FISHER PAYKEL: 24" CONTEMPORARY CONVECTION SPEED OVEN, Dimensions: H 18" x W 23.5" x D 22.5" Model: OM24NDB1
- 6.) FISHER PAYKEL: 36" Contemporary Induction Cooktop, D: 20 7/8" x W: 35 7/16" x H: 3 11/16",, Model: CI365DTB4
- 7) WAYPOINT: 36" Tapered Range Hood, 600 CFM, Liner included: Dimensions 35 15/16" wide x 7" deep x 24" high", Model: RH3624 T
- 8) FISHER PAYKEL: Stainless Steel Double DishDrawer™ Tall with Recessed Handle, D: 22 9/16" x W: 23 9/16" x H: 34 - 36 3/8" Model: DD24DCTX9 N
- 9) KOHLER: Whitehaven: Undermount single-bowl farmhouse kitchen sink with tall apron, W: 36" x H: 9" x D 21".Model: K-6489
- 10) KOHLER: Artifacts Touchless Sink Faucet: Polished Chrome, H: 17 5/8" Model: K-29709-CP
- 10A) TOP KNOBS: PULL: ELLIS COLLECTION- DAVENPORT PULL 7 9/16 INCH (C-C) BRUSHED SATIN NICKEL MODEL: TK3024BSN
- 10B) TOP KNOBS: PANTRY KNOB: ELLIS COLLECTION- ELLIS KNOB 1 1/4 INCH BRUSHED SATIN NICKEL, MODEL: TK3000BSN
- 11) KITCHENAID: 24 in. Slow Cook Warming Drawer in Stainless Steel, W: 22.5" D" 24" H 10.25" MODEL: KOWT100E
- 12) WELLBORN CABINET, Base Spice Rack Cabinet Model: BSR9 9" W
- 13) FISHER PAYKEL: 20" Double Trash/ Recycle Bin, Model TB1-20, D: 25" x W: 20 5/16" x H: 29 1/8"
- 13A.) LAMPSPLUS: Possini Euro Ebbets 18 1/4" Wide Chrome Round Pendant Light: Style # 9H360
- 14.) WELLBORN CABINRT, Appliance Garage, Model W3054ADR, D:12" x W 30" x H: 54"
- 15.) POTTERY BARN: Natural Woven Pendant Lights, 13.25" W x 10.25" H



DESIGNED FOR
Shawn & Jalen Hill
BY
KATE APABLAZA

DESIGN COMPETITION
FINAL PROJECT
KITCHEN

PRESENTATION
BOARD

| | DATE | BY |
|-----|---------|----|
| DWN | 4/23/22 | |
| REV | | |
| | | |
| | | |

Student
Version

SCALE SEE VIEW
Applicable on Arch B Paper

Not for
Construction
Documents

DATE

28

SHEET #

HILL KITCHEN SPECIFICATIONS

- 16.) SHADES OF LIGHT: CLASSIC DOME SHADE PENDANT LIGHT WITH CHAIN – LARGE, Pewter, 17"Hx14"Wx14"D
- 17.) ROSILAND WHEELER, 8 LIGHT IRON FARMHOUSE CHANDELIER, BLACK, 14.1" H x 37.4" W x 37.4" D
- 18.) BENJAMIN MOORE: PAINT COLOR, Woodlawn Blue, Island, Walls, Pantry Doors.
- 19.) BENJAMIN MOORE, PAINT COLOR, Oxford White, Walls
- 20.) BENJAMIN MOORE PAINT COLOR, Balboa Mist, All Wall Cabinets & Base Cabinets.
- 21.) WELLBORN CABINETS, "Lazy Susan" DIAGONAL CORNER SINK BASE CABINETS WITH FULL HEIGHT DOORS AND WOOD SPIN TRAYS, Model DCSB36FHST, 36' W x 36"D
- 22.) FLOOR: Concrete Floor, White, Natural Look, Semi-Gloss Sealer.
- 23.) CEILING: PNW BARNWOOD SUPPLY: Reclaimed 1x4 Old-Growth CVG Douglas Fir T&G PNW Barn Wood planks, 3.25" face. Locally sourced reclaimed old growth wood from the Douglas Fir tree, native to Oregon.
- 24.) DINING TABLE: WEST ELM: Farrow Communal Table, Driftwood on Oak, 120" L
- 25.) DINING CHAIR: POTTERY BARN: Beale Velvet Dining Chair



DESIGNED FOR
Shawn & Jalen Hill
BY
KATE APABLAZA

DESIGN COMPETITION
FINAL PROJECT
KITCHEN

PRESENTATION
BOARD

| | DATE | BY |
|-----|---------|----|
| DWN | 4/23/22 | |
| REV | | |
| | | |
| | | |

Student
Version

SCALE SEE VIEW
Applicable on Arch B Paper

Not for
Construction
Documents

DATE

SHEET #
29