

**CENTURY COLLEGE**  
**3300 CENTURY AVE N**  
**WBL, MN 55110**

DESIGNED FOR  
**Kate Apablaza**  
BY  
**NAME HERE**

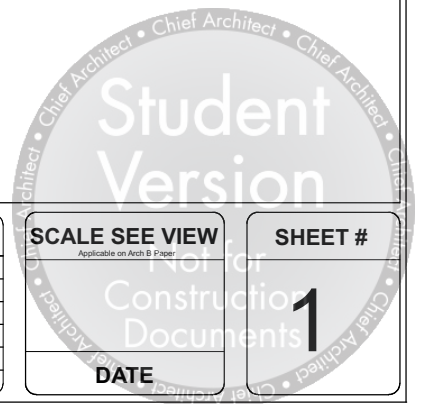
**KBD 2020**  
**BASIC CAD**

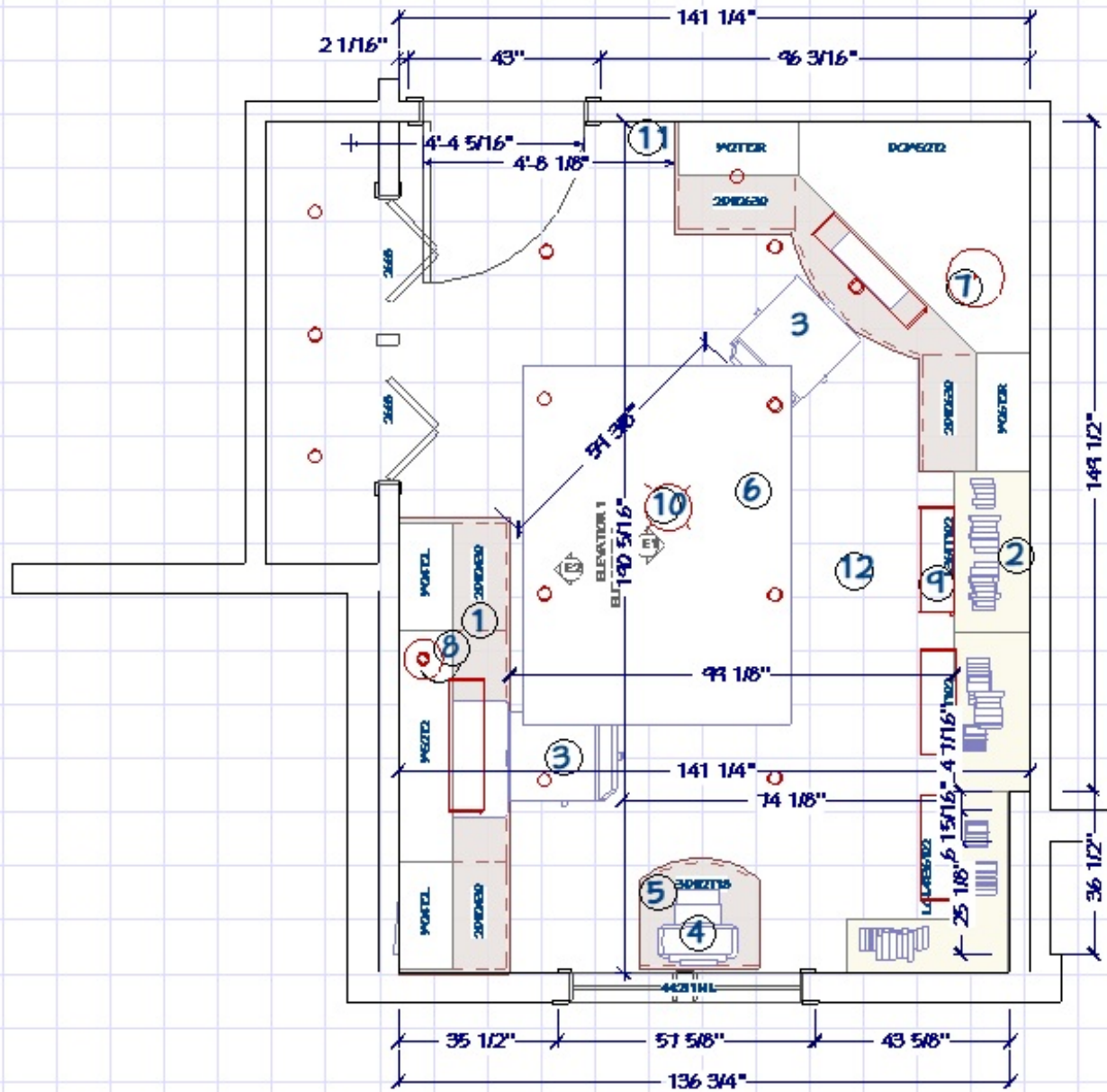
**HOME OFFICE**

	DATE	BY
DWN		
REV		

**SCALE SEE VIEW**  
Applicable on Arch B Paper  
Not for  
Construction  
Documents  
**DATE**

**SHEET #**  
**1**





**SPECIFICATIONS**

- ① Creswood Base Cabinet
- ② Creswood Wall Cabinet
- ③ Office Chair
- ④ Printer
- ⑤ Filing Cabinet
- ⑥ Rug
- ⑦ Lamp 1
- ⑧ Lamp 2
- ⑨ Sconces on Cabinets
- ⑩ Chandelier
- ⑪ Wall Paint
- ⑫ Wood Floor

**CENTURY COLLEGE**  
 3300 CENTURY AVE N  
 WBL, MN 55110

DESIGNED FOR  
**Kate Apablaza**  
 BY  
**NAME HERE**

**KBD 2020**  
**BASIC CAD**

**Floor Plan**  
**HOME OFFICE**

	DATE	BY
DWN		
REV		

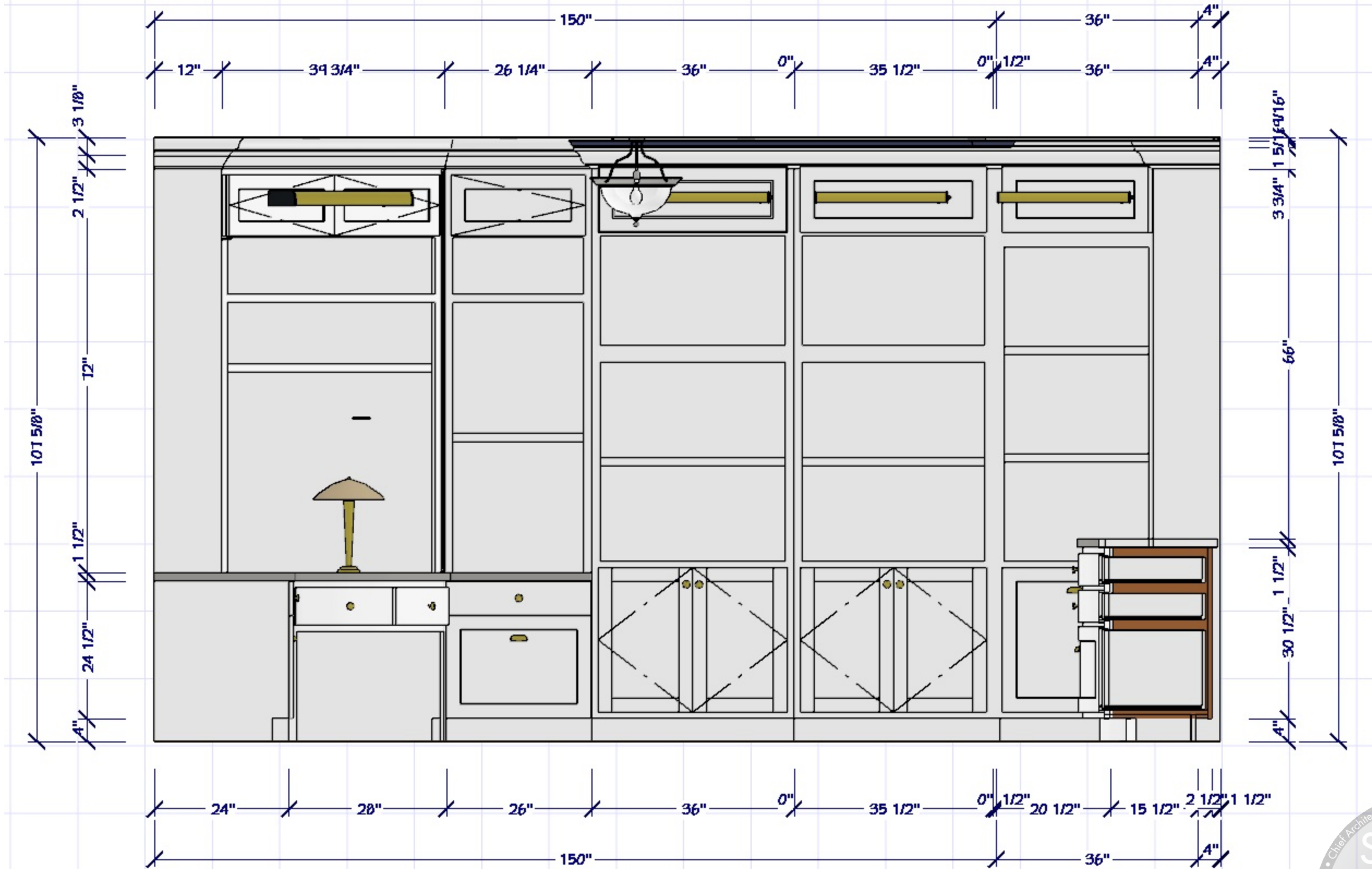
**Student Version**

Not for Construction Documents

SCALE SEE VIEW

DATE

SHEET # **2**



CENTURY COLLEGE  
3300 CENTURY AVE N  
WBL, MN 55110

DESIGNED FOR  
BY NAME HERE

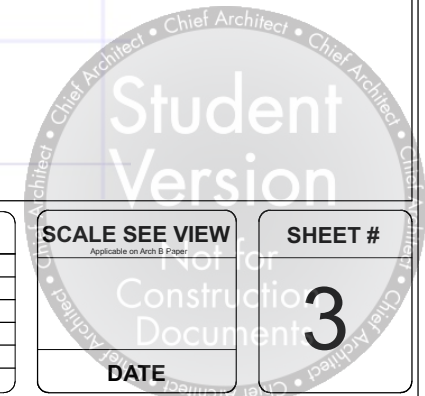
KBD 2020  
BASIC CAD

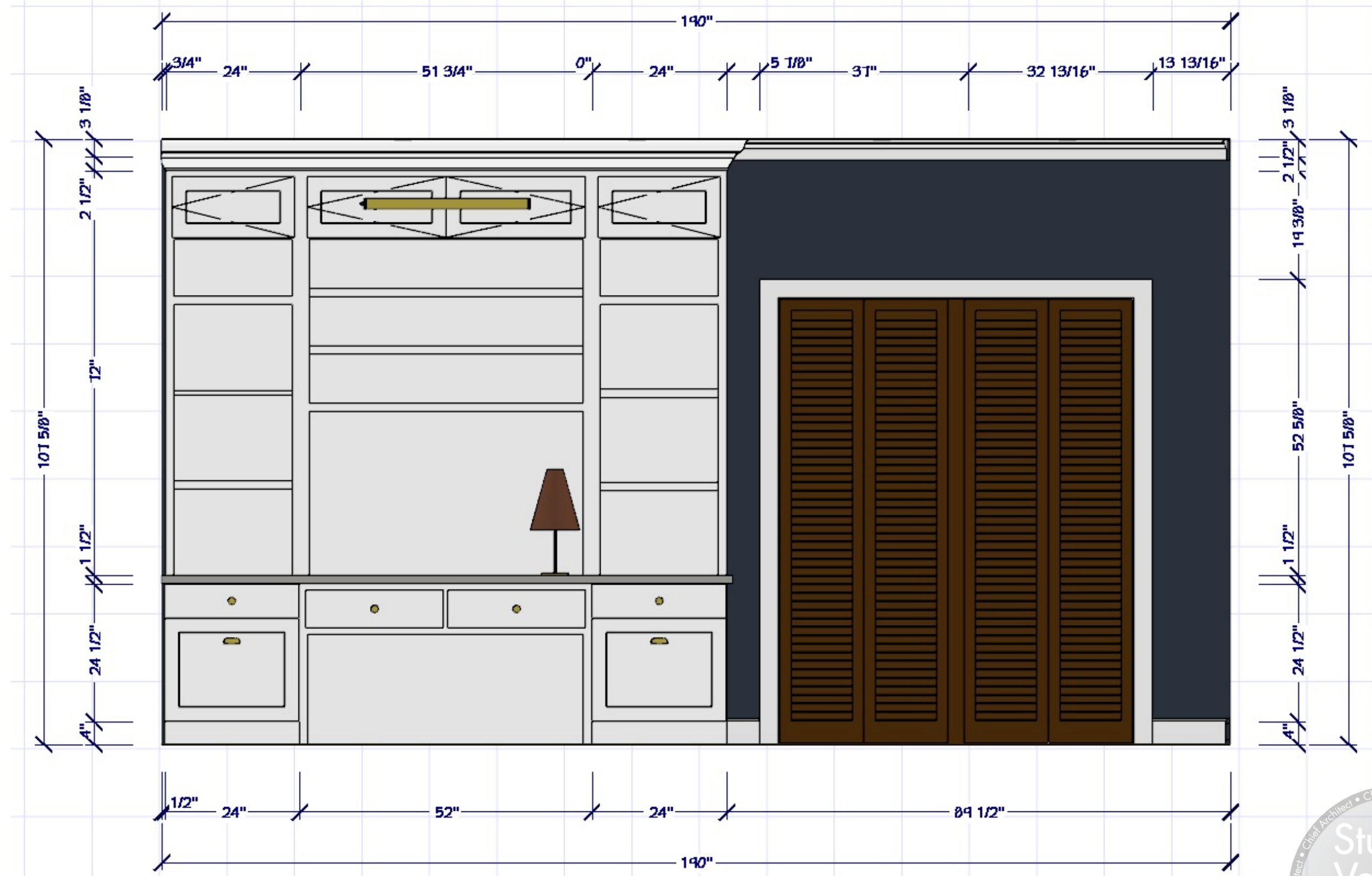
Elevation 1

	DATE	BY
DWN		
REV		

SCALE SEE VIEW  
Not for  
Construction  
Document  
DATE

SHEET #  
3





CENTURY COLLEGE  
3300 CENTURY AVE N  
WBL, MN 55110

DESIGNED FOR  
BY NAME HERE

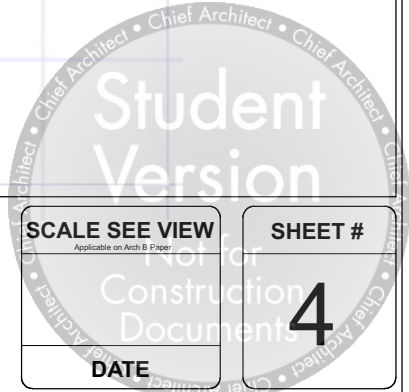
KBD 2020  
BASIC CAD

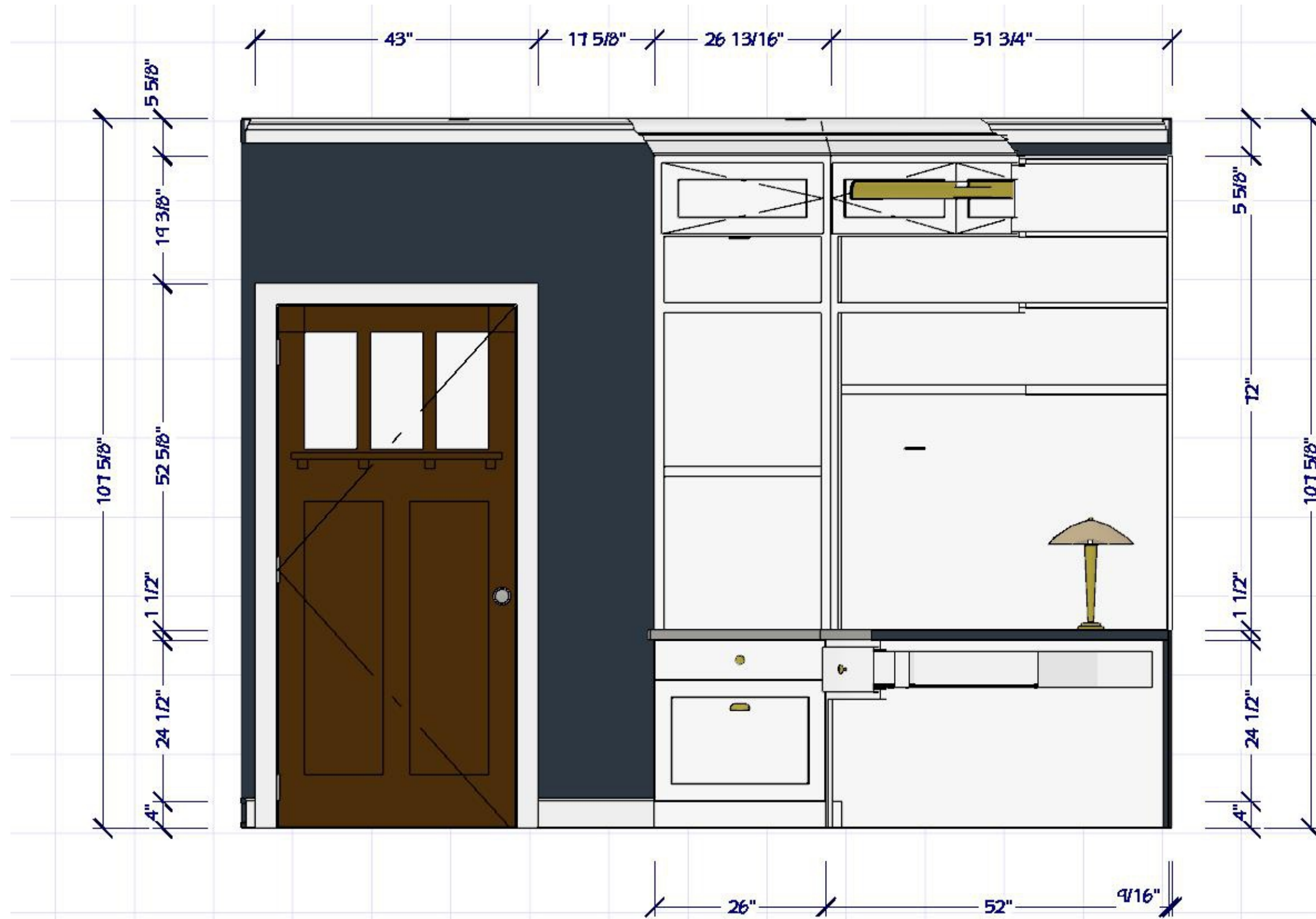
Elevation 2

DWN REV	DATE	BY

SCALE SEE VIEW  
Not for  
Construction  
Documents  
DATE

SHEET #  
4





CENTURY COLLEGE  
3300 CENTURY AVE N  
WBL, MN 55110

DESIGNED FOR  
BY NAME HERE

KBD 2020  
BASIC CAD

	DATE	BY
DWN		
REV		

Student Version

Not for Construction Documents

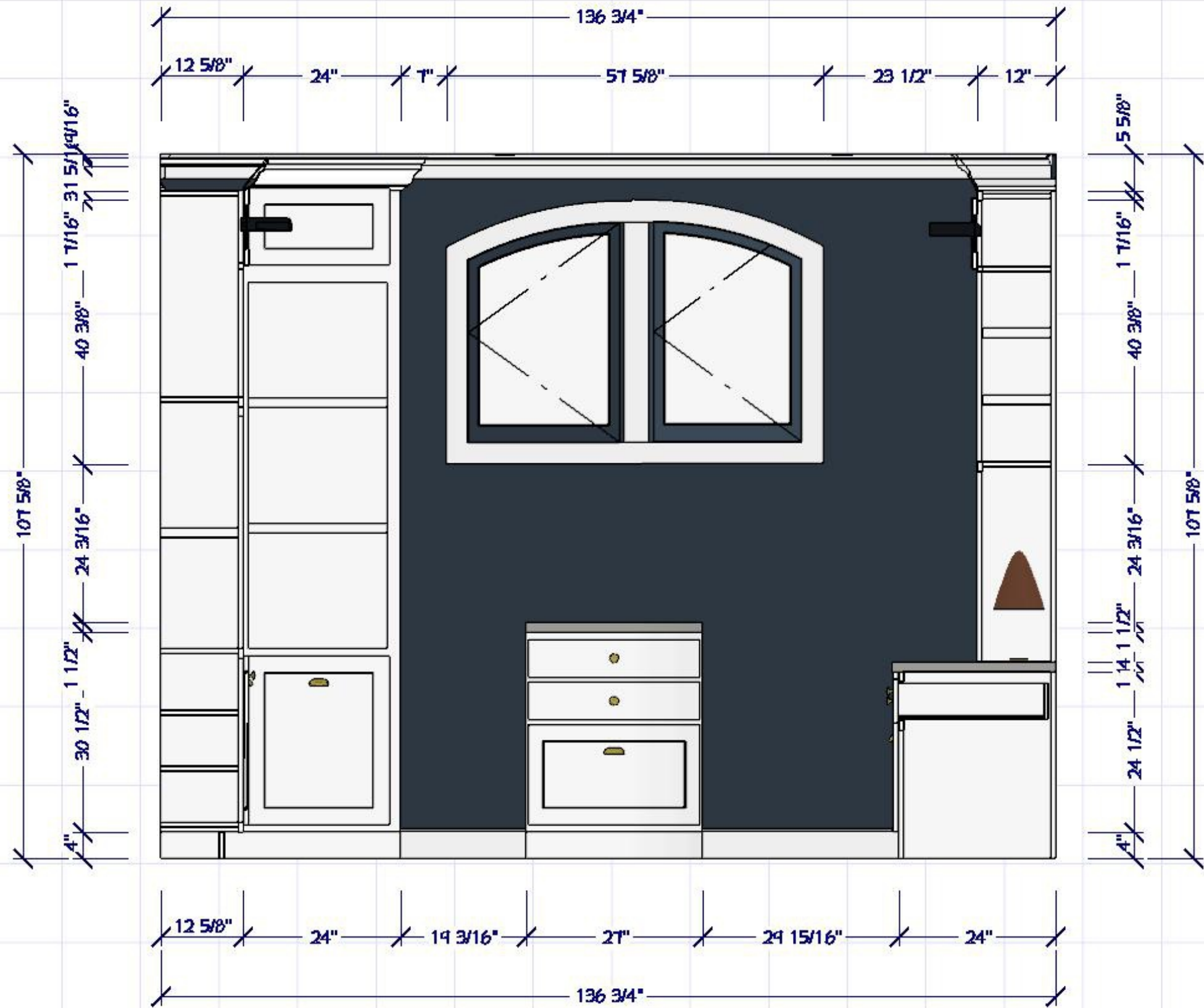
5

SCALE SEE VIEW

Applicable on Arch B Paper

DATE

SHEET #



CENTURY COLLEGE  
3300 CENTURY AVE N  
WBL, MN 55110

DESIGNED FOR  
BY NAME HERE

KBD 2020  
BASIC CAD

	DATE	BY
DWN		
REV		

Student Version

Not for Construction Documents

SCALE SEE VIEW

DATE

SHEET # 6



**CENTURY COLLEGE**  
**3300 CENTURY AVE N**  
**WBL, MN 55110**

DESIGNED FOR  
 BY **NAME HERE**

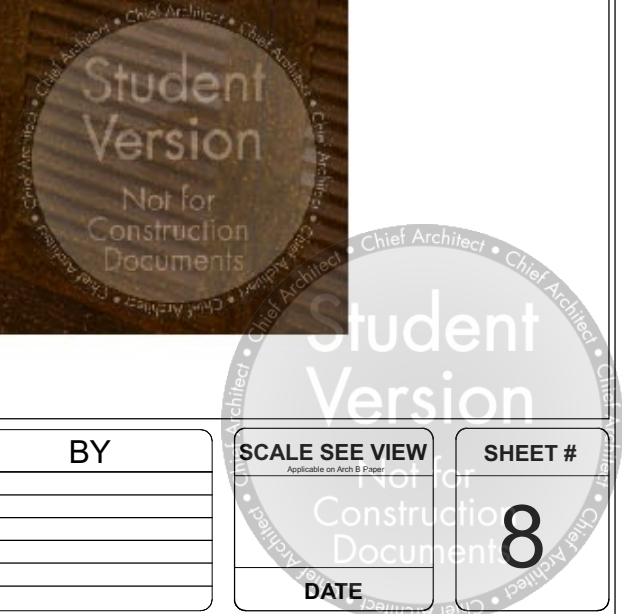
**KBD 2020**  
**BASIC CAD**

**PERSPECTIVE**

	DATE	BY
DWN		
REV		

**SCALE SEE VIEW**  
Applicable on Arch B Page  
 Not for  
 Construction  
 Documents  
**DATE**

**SHEET #**  
**7**



CENTURY COLLEGE  
 3300 CENTURY AVE N  
 WBL, MN 55110

DESIGNED FOR  
 BY NAME HERE

KBD 2020  
 BASIC CAD

PERSPECTIVE

	DATE	BY
DWN		
REV		

SCALE SEE VIEW  
Applicable on Arch B Floor  
 Not for Construction Documents  
 DATE

SHEET #  
 8





**CENTURY COLLEGE**  
**3300 CENTURY AVE N**  
**WBL, MN 55110**

DESIGNED FOR  
 BY **NAME HERE**

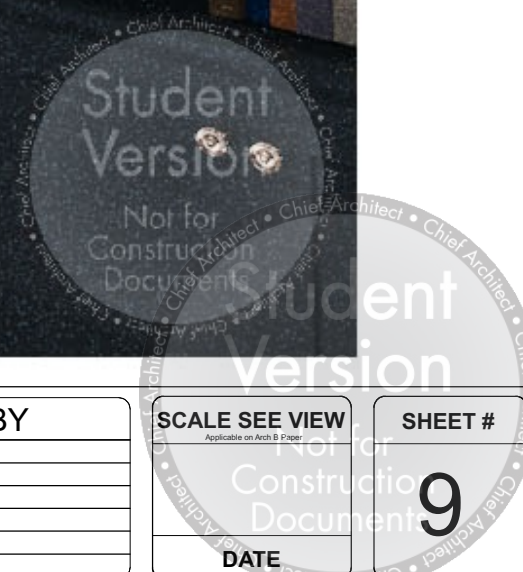
**KBD 2020**  
**BASIC CAD**

**PERSPECTIVE**

	DATE	BY
DWN		
REV		

**SCALE SEE VIEW**  
Applicable on Arch B Page  
 Not for Construction Documents  
**DATE**

**SHEET #**  
**9**





**CENTURY COLLEGE**  
**3300 CENTURY AVE N**  
**WBL, MN 55110**

DESIGNED FOR  
 BY **NAME HERE**

**KBD 2020**  
**BASIC CAD**

**PERSPECTIVE**

	DATE	BY
DWN		
REV		

SCALE SEE VIEW  
Applicable on Arch B Plans  
 DATE

SHEET #  
**10**

ID	Sub Category	Floor	Manufacturer	Code	Size	Description	Count
1	<b>General</b>						
2	GN1	1				thermal envelope - ceiling area	202.44 sq ft
3	GN2	1				thermal envelope - floor area	202.44 sq ft
4	GN3	1				thermal envelope - wall area - South	112.53 sq ft
5	GN4	1				thermal envelope - window area - South	11.15 sq ft
6	GN5	1				thermal envelope - wall area - East	143.35 sq ft
7	GN6	1				thermal envelope - wall area - North	105.49 sq ft
8	GN7	1				thermal envelope - wall area - West	138.31 sq ft
9	GN8	1				thermal envelope - door area - North	20.00 sq ft
10	GN9	1			109 1/8 high Wall	Siding-6	61 ft
11	GN10	1			109 1/8 high Wall	Interior-4	60 ft
12							
13	<b>Subfloor</b>						
14	SF1	1			48"x96"x3/4"	OSB-Hrz	8
15							
16	<b>Siding</b>						
17	S1	1			4" wide	Lap Siding	1738 ft
18	S2	1				Housewrap	564.90 sq ft
19	S3	1			48"x96"x7/16"	OSB-Hrz	20
20	S4	1			48"x96"x1/2"	Drywall	16
21							
22	<b>Exterior Trim</b>						
23	EX1	1			1x4	ext. window casing - color - brite	11 ft
24	EX2	1			1x4 ir=51"	ext. window casing - color - brite	3 ft
25	EX3	1			1x4 ir=53 5/16"	ext. window casing - color - brite	3 ft
26	EX4	1			1x5-36"	door threshold	1
27	EX5	1			1x4	ext. door casing - color - brite	18 ft
28	EX6	1			5x1	ext. door jamb - color - brite	17 ft
29	EX7	1			3" wide	between window trim - color - brite	7 ft
30							
31	<b>Insulation</b>						
32	IN1	1			6x16x93" batts	wall insulation	17
33	IN2	1			4x16x93" batts	wall insulation	30
34	IN3	1			12x16x48" batts	ceiling insulation	38
35	IN4	1			12x16x48" batts	floor insulation	38
36							
37	<b>Flooring</b>						
38	FL1	1			5" wide	Maple 5" Plank - Natural	44 ft
39	FL2	1			1/8" thick	Foam Underlayment	204.41 sq ft
40	FL3	1			5" wide	Walnut 5" Plank - Honev	447 ft
41							
42	<b>Wall Board</b>						
43	WB1	1			48"x96"x1/2"	Drywall	34
44	WB2	1			48"x96"x5/8"	Drywall	7

Extra	Price	Total Cost	Comment	Label
1				
2		\$0.00		
3		\$0.00		
4		\$0.00		
5		\$0.00		
6		\$0.00		
7		\$0.00		
8		\$0.00		
9		\$0.00		
10		\$0.00		
11		\$0.00		
12		Subtotal:	\$0.00	
13				
14		\$0.00		
15		Subtotal:	\$0.00	
16				
17		\$0.00		
18		\$0.00		
19		\$0.00		
20		\$0.00		
21		Subtotal:	\$0.00	
22				
23		\$0.00		
24		\$0.00		
25		\$0.00		
26		\$0.00		
27		\$0.00		
28		\$0.00		
29		\$0.00		
30		Subtotal:	\$0.00	
31				
32		\$0.00		
33		\$0.00		
34		\$0.00		
35		\$0.00		
36		Subtotal:	\$0.00	
37				
38		\$0.00		
39		\$0.00		
40		\$0.00		
41		Subtotal:	\$0.00	
42				
43		\$0.00		
44		\$0.00		

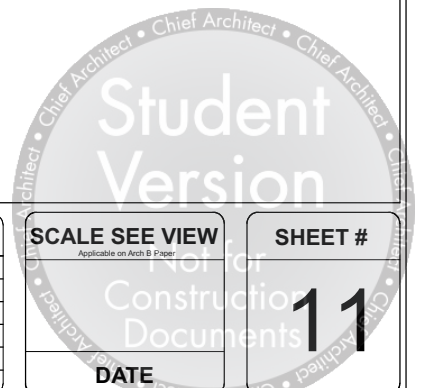
**CENTURY COLLEGE**  
**3300 CENTURY AVE N**  
**WBL, MN 55110**

DESIGNED FOR  
 BY **NAME HERE**

**KBD 2020**  
**BASIC CAD**

DWN	DATE	BY
REV		

SCALE SEE VIEW  
Applicable on Arch B Paper  
 Not for Construction Documents  
**11**  
 DATE



ID	Sub Category	Floor	Manufacturer	Code	Size	Description	Count
45	WB3	1				Color - Snow White	202.44 sq ft
46							
47	<b>Windows</b>						
48	W1	1			52 3/8x35 1/8-mu	Mulled Unit	1
49							
50	<b>Doors</b>						
51	D1	1			36"x80"x1 3/4"	ext. Hinged-Door E21	1
52	D2	1				handle: Knob	1
53	D3	1				handle: Lever (ext.)	1
54	D4	1				hinge: Standard	3
55	D5	1			(2) 15"x80"x1 3/8"	2 Dr. Bifold-Louvered	2
56	D6	1				hinge: Hidden	4
57							
58	<b>Cabinets</b>						
59	C1	1			36x17 1/8x102"	utility cabinet material -	1
60	C1.1	1				HomeOfficeBlue1 door - Framed	1
61	C1.2	1			16 7/8x25 3/4"	Panel	2
62	C1.3	1			1 1/4"	CK 07 (pull)	2
63	C1.4	1			33 3/4x11 3/4"	door - Hershing	1
64	C1.5	1				hidden hinge	4
65	C2	1			40 1/2x36x102"	corner utility cabinet material -	1
66	C2.1	1				HomeOfficeBlue1 drawer	1
67	C2.2	1			21 5/8x25 3/4"	CP13 Cup Pull (pull)	2
68	C2.3	1			3"		2
69	C2.4	1			21 5/8x11 3/4"	door	1
70	C2.5	1			26 1/8x25 3/4"	drawer	1
71	C2.6	1			26 1/8x11 3/4"	door	1
72	C2.7	1				drawer glide	2
73	C3	1			27x18x36"	bow front base cabinet material -	1
74	C3.1	1				HomeOfficeBlue1 drawer	1
75	C3.2	1			24 3/4x15 1/4"	CP13 Cup Pull (pull)	1
76	C3.3	1			3"		1
77	C3.4	1			24 3/4x5 3/4"	drawer	2
78	C3.5	1			1 1/4"	CK 07 (pull)	2
79	C3.6	1				drawer glide	6
80	C4	1				countertop - silver tarnished	46.01 sq ft
81	C5	1				countertop front cap	50 ft
82	C6	1			52x52x30"	corner base cabinet material -	1
83	C6.1	1				HomeOfficeBlue1 drawer	1
84	C6.2	1			18 5/16x6 3/4"		2
85	C6.3	1			1 1/4"	CK 07 (pull)	2
86	C6.4	1				drawer glide	4
87	C7	1			51 3/4x51 3/4x72"	corner wall cabinet material -	1
88	C7.1	1				HomeOfficeBlue1	1

Extra	Price	Total Cost	Comment	Label
		\$0.00		
	Subtotal:	\$0.00		
		\$0.00		44211MU
	Subtotal:	\$0.00		
		\$0.00		3068
		\$0.00		
		\$0.00		
		\$0.00		2668
		\$0.00		
	Subtotal:	\$0.00		
		\$0.00		U3617102
		\$0.00		
		\$0.00		
		\$0.00		
		\$0.00		
		\$0.00		
		\$0.00		LCU4136102
		\$0.00		
		\$0.00		
		\$0.00		
		\$0.00		
		\$0.00		
		\$0.00		
		\$0.00		
		\$0.00		3DB2718
		\$0.00		
		\$0.00		
		\$0.00		
		\$0.00		
		\$0.00		
		\$0.00		
		\$0.00		DCB5230
		\$0.00		
		\$0.00		
		\$0.00		
		\$0.00		
		\$0.00		
		\$0.00		DCW5272
		\$0.00		

**CENTURY COLLEGE**  
**3300 CENTURY AVE N**  
**WBL, MN 55110**

DESIGNED FOR

BY

**NAME HERE**

**KBD 2020**  
**BASIC CAD**

	DATE	BY
DWN		
REV		

**Student Version**  
 Not for Construction Documents  
 SCALE SEE VIEW  
 SHEET # **12**  
 DATE

ID	Sub Category	Floor	Manufacturer	Code	Size	Description	Count
89	C7.2	1			26 9/16x10 13/16"	door	2
90	C7.3	1			1/4"	ROSETTEMIS (front nillaster)	1
91	C7.4	1				hidden hinge	4
92	C8	1			24x24x30"	base cabinet	2
93	C8.1	1				material - HomeOfficeBlue1	2
94	C8.2	1			23 7/8x18 5/16"	drawer	2
95	C8.3	1			3"	CP13 Cup Pull (null)	2
96	C8.4	1			23 7/8x6 1/16"	drawer	2
97	C8.5	1			1 1/4"	CK 07 (pull)	2
98	C8.6	1				drawer glide	8
99	C9	1			35 1/2x17 1/8x102"	utility cabinet	1
100	C9.1	1				material - HomeOfficeBlue1	1
101	C9.2	1			16 5/8x25 3/4"	door - Framed Panel	2
102	C9.3	1			1 1/4"	CK 07 (pull)	2
103	C9.4	1			33 1/4x11 3/4"	door	1
104	C9.5	1				hidden hinge	4
105	C10	1			26 13/16x12x72"	wall cabinet	1
106	C10.1	1				material - HomeOfficeBlue1	1
107	C10.2	1			24 9/16x10 13/16"	door	1
108	C10.3	1				hidden hinge	2
109	C11	1			26 1/4x12x72"	wall cabinet	1
110	C11.1	1				material - HomeOfficeBlue1	1
111	C11.2	1			24x10 13/16"	door	1
112	C11.3	1				hidden hinge	2
113	C12	1			26x24x30"	base cabinet	1
114	C12.1	1				material - HomeOfficeBlue1	1
115	C12.2	1			25 7/8x18 5/16"	drawer	1
116	C12.3	1			3"	CP13 Cup Pull (null)	1
117	C12.4	1			25 7/8x6 1/16"	drawer	1
118	C12.5	1			1 1/4"	CK 07 (pull)	1
119	C12.6	1			3"x9/16"x1"	Insert: CP13 Cup Pull	1
120	C12.7	1				drawer glide	4
121	C13	1			26x24x30"	base cabinet	1
122	C13.1	1				material - HomeOfficeBlue1	1
123	C13.2	1			25 7/8x18 5/16"	drawer	1
124	C13.3	1			3"	CP13 Cup Pull (null)	1
125	C13.4	1			25 7/8x6 1/16"	drawer	1
126	C13.5	1			1 1/4"	CK 07 (pull)	1
127	C13.6	1				drawer glide	4
128	C14	1			24x24x36"	base cabinet	1
129	C14.1	1				material - HomeOfficeBlue1	1
130	C14.2	1			23 7/8x24 5/16"	door - Framed Panel	1
131	C14.3	1			23 7/8x6 1/16"	drawer	1
132	C14.4	1			1"	knob	2

Extra	Price	Total Cost	Comment	Label
89		\$0.00		
90		\$0.00		
91		\$0.00		
92		\$0.00	2DB2430	
93		\$0.00		
94		\$0.00		
95		\$0.00		
96		\$0.00		
97		\$0.00		
98		\$0.00		
99		\$0.00	U3617102	
100		\$0.00		
101		\$0.00		
102		\$0.00		
103		\$0.00		
104		\$0.00		
105		\$0.00	W2772R	
106		\$0.00		
107		\$0.00		
108		\$0.00		
109		\$0.00	W2672R	
110		\$0.00		
111		\$0.00		
112		\$0.00		
113		\$0.00	2DB2630	
114		\$0.00		
115		\$0.00		
116		\$0.00		
117		\$0.00		
118		\$0.00		
119		\$0.00		
120		\$0.00		
121		\$0.00	2DB2630	
122		\$0.00		
123		\$0.00		
124		\$0.00		
125		\$0.00		
126		\$0.00		
127		\$0.00		
128		\$0.00	B24R	
129		\$0.00		
130		\$0.00		
131		\$0.00		
132		\$0.00		

Extra	Price	Total Cost	Comment	Label
177		\$0.00		Puck
178		\$0.00		Rectangular
179		\$0.00	Subtotal:	
180				
181		\$0.00	Total:	

ID	Sub Category	Floor	Manufacturer	Code	Size	Description	Count
177	E2	1				Puck	11
178	E3	1				Rectangular	5
179							
180							
181							

**CENTURY COLLEGE**  
**3300 CENTURY AVE N**  
**WBL, MN 55110**

DESIGNED FOR  
 BY **NAME HERE**

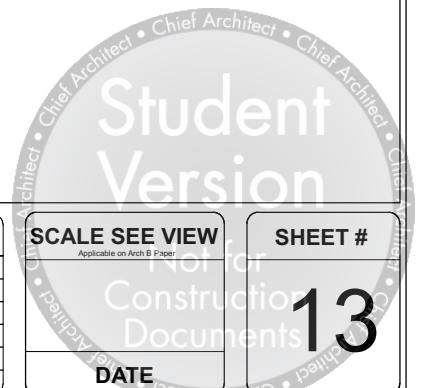
**KBD 2020**  
**BASIC CAD**

DWN	DATE	BY
REV		

SCALE SEE VIEW  
Applicable on Arch B Paper  
 Not for  
 Construction  
 Documents

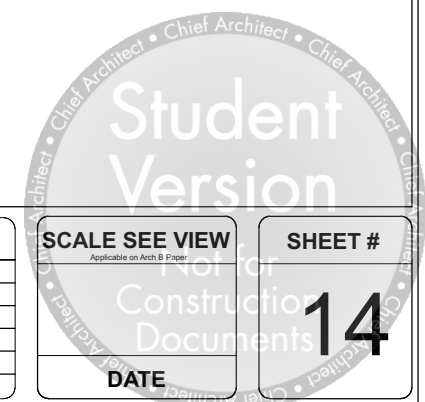
**13**

DATE



ID	Sub Category	Floor	Manufacturer	Code	Size	Description	Count
133	C14.5	1				hidden hinge	2
134	C14.6	1				drawer glide	2
135	C15	1				countertop - granite(black-white)	4.17 sq ft
136	C16	1			52x24x30"	base cabinet	1
137	C16.1	1				material - HomeOfficeBlue1	1
138	C16.2	1			24 1/2x6 3/4"	drawer	2
139	C16.3	1			1 1/4"	CK 07 (pull)	2
140	C16.4	1				drawer glide	4
141	C17	1			51 3/4x12x72"	wall cabinet	1
142	C17.1	1				material - HomeOfficeBlue1	1
143	C17.2	1			24 3/4x10 13/16"	door	2
144	C17.3	1				hidden hinge	4
145	C18	1			24x12x72"	wall cabinet	2
146	C18.1	1				material - HomeOfficeBlue1	2
147	C18.2	1			21 3/4x10 13/16"	door	2
148	C18.3	1				hidden hinge	4
149							
150	<b>Interior Trim</b>						
151	T1	1			1x3	interior casing - cherry - medium--painted:	28 ft
152	T2	1			1x3 lr=51"	interior casing - cherry - medium--painted:	3 ft
153	T3	1			1x3 lr=53 5/16"	interior casing - cherry - medium--painted:	3 ft
154	T4	1			1x3	between window trim - cherry - medium--painted:	14 ft
155	T5	1			1x3	interior casing - cherry - medium	40 ft
156	T6	1			5x1	interior jamb - cherry - medium	19 ft
157	T7	1			1x4	cabinet molding: CA-34	41 ft
158	T8	1			1x1	cabinet molding: CA-20	21 ft
159	T9	1			1x3	cabinet molding: CM-01	23 ft
160	T10	1			1x4	base molding: Default Base Moldina	15 ft
161	T11	1	Homecrest Cabinetrv		1x4	base molding: BBMSH8	23 ft
162	T12	1			1x4	crown molding: Default Base Moldina	56 ft
163	T13	1			1x2	crown molding: PR-02	56 ft
164							
165	<b>Fixtures</b>						
166	FX1	1			8 7/16W6 7/8D	Books	1
167	FX2	1			25 15/16W21 5/16D	Laptop 2	1
168	FX3	1			18 5/8W14D	Laptop 1	1
169							
170	<b>Furniture</b>						
171	FU1	1			26W26D	Office Chair 4	2
172	FU2	1			80W60D	Med Area Rug	1
173	FU3	1			17 11/16W17D	Desktop Printer	1
174							
175	<b>Electrical</b>						
176	E1	1			ceiling mounted	Traditional Semi Flush	1

Extra	Price	Total Cost	Comment	Label
133		\$0.00		
134		\$0.00		
135		\$0.00		
136		\$0.00		2DB5230
137		\$0.00		
138		\$0.00		
139		\$0.00		
140		\$0.00		
141		\$0.00		W5272
142		\$0.00		
143		\$0.00		
144		\$0.00		
145		\$0.00		W2472L
146		\$0.00		
147		\$0.00		
148		\$0.00		
149	Subtotal:	\$0.00		
150				
151		\$0.00		
152		\$0.00		
153		\$0.00		
154		\$0.00		
155		\$0.00		
156		\$0.00		
157		\$0.00		
158		\$0.00		
159		\$0.00		
160		\$0.00		
161		\$0.00		
162		\$0.00		
163		\$0.00		
164	Subtotal:	\$0.00		
165				
166		\$0.00		Books
167		\$0.00		Laptop 2
168		\$0.00		Laptop 1
169	Subtotal:	\$0.00		
170				
171		\$0.00		Office Chair 4
172		\$0.00		Med Area Rug
173		\$0.00		Desktop Printer
174	Subtotal:	\$0.00		
175				
176		\$0.00		Traditional Semi Flush



**CENTURY COLLEGE**  
**3300 CENTURY AVE N**  
**WBL, MN 55110**

DESIGNED FOR  
 BY **NAME HERE**

**KBD 2020**  
**BASIC CAD**


	DATE	BY
DWN		
REV		

SCALE SEE VIEW  
Applicable on Arch B Paper  
 SHEET # **14**  
 DATE